

St. Thomas Street, SE1

£1,730 Per week

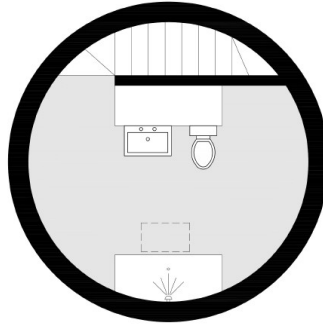
This spectacular two-bedroom apartment is configured across five storeys, in the tower of St Thomas's Church, in London Bridge. Originally built in 1703 by Thomas Cartwright, an architect and master mason of Christopher Wren, the church was used as a chapter house for Southwark Cathedral and in part, as an operating theatre for St Thomas's Hospital. The apartment has just had a roof terrace added to the top floor, creating astonishing views of the city skyline.

This truly one of a kind converted apartment is superbly located opposite London Bridge Stations and The Shard, on an adjacent road to Borough High Street and Borough Market, a short walk from Bermondsey Street and around 100m as the crow flies to the River.

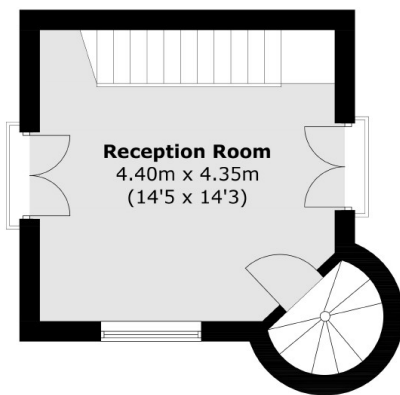
Features

- Amazing Views
- Church Tower Conversion
- Split Over Five Floors
- Over 1000sqft
- One of a Kind Apartment
- Fantastic Location

St. Thomas Street, London, SE1

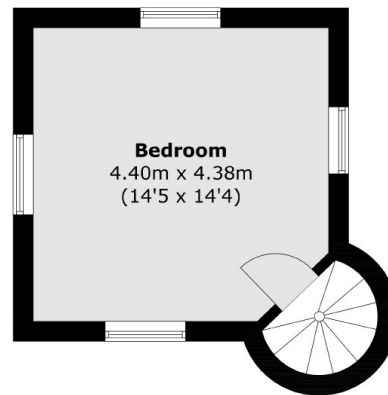


Seventh Floor



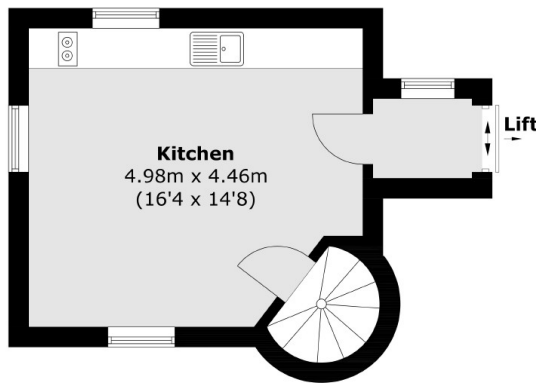
Reception Room
4.40m x 4.35m
(14'5 x 14'3)

Sixth Floor



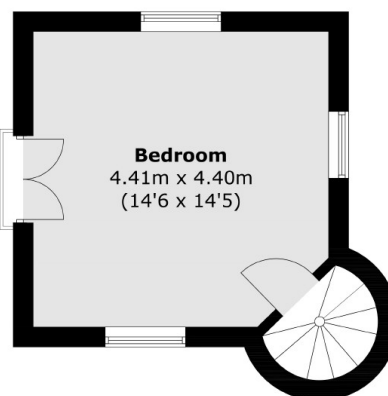
Bedroom
4.40m x 4.38m
(14'5 x 14'4)

Fifth Floor



Kitchen
4.98m x 4.46m
(16'4 x 14'8)

Third Floor



Bedroom
4.41m x 4.40m
(14'6 x 14'5)

Fourth Floor

Total area (approx.): 101.9 sq. m (1,096.9 sq. ft)