



Nelson Square, SE1
£715,000

Dexters



Nelson Square, SE1

A very rarely available, split level Georgian Conversion, sold with a Share of Freehold, a large living room and separate kitchen, two bedrooms, including a very large principal bedroom and a three piece bathroom, plus on-street permit parking and access to a communal garden.

Set over the upper two floors of the building, 3rd and 4th, this property benefits from fantastic natural light and a wonderful aspect on both sides. Both the principal bedroom and living room have three large sash windows, overlooking the square itself.

This Georgian Terrace is in immaculate condition, benefitting from the very best of Georgian Architecture, sash windows, original fireplaces and a flat-fronted facade. It overlooks the square itself in one side and the communal garden to the rear.

The residents collectively enfranchised in 2005, to each acquire an even Share of the Freehold and to extend the underlying lease to 999 years. The building is well managed with an annual sinking fund payment to cover major works and has a genuine community feel.

Features

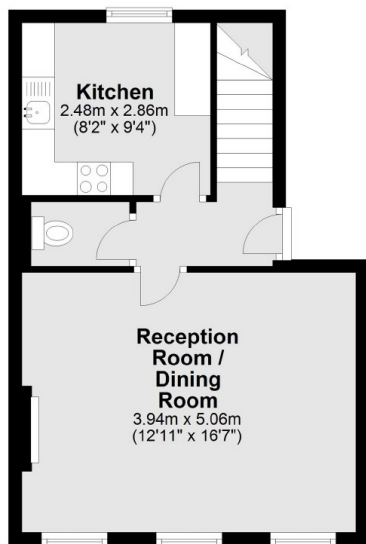
Nelson Square is enviably located in the heart of SE1, moments from

- Share of Freehold
- Georgian Conversion
- Split Level
- Large Living Room
- Permit Parking
- Communal Garden

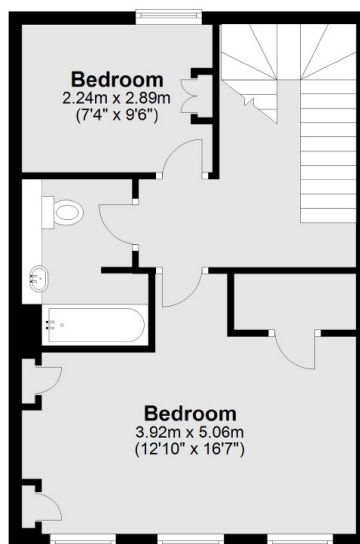


Nelson Square, London, SE1

Ground Floor



First Floor



Total area: approx. 73.5 sq. metres (790.9 sq. feet)