



Arabella Street, SE16

£500,000

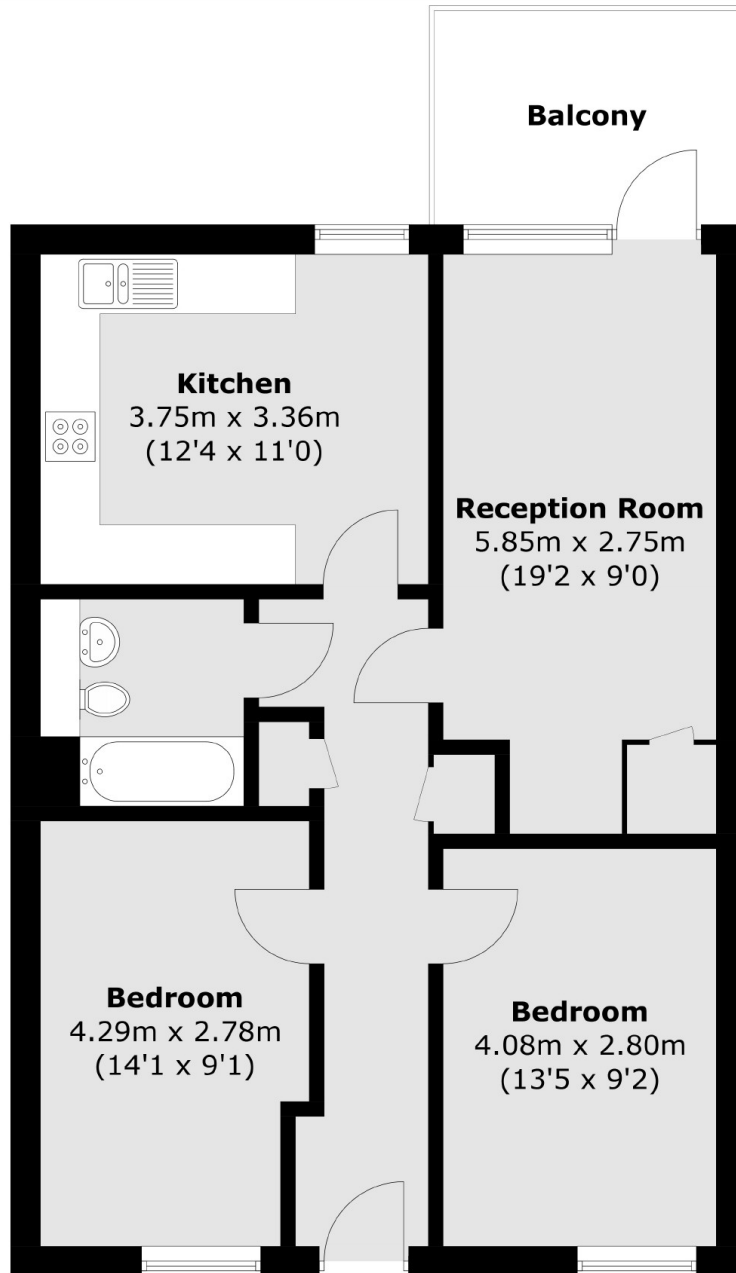
Situated moments from Bermondsey station, this two double bedroom flat is in excellent condition and has a large open plan kitchen living space, modern bathroom and private balcony.

Pitman Building is 0.1 miles from Bermondsey station offering excellent transport links to all of London. Maltby Street Market, Bermondsey Street, Shad Thames and London Bridge are also close by.

Features

- Two Double Bedrooms
- Private Balcony
- Chain Free
- Excellent Location
- Modern Development
- Long Lease

Arabella Street, London, SE16



Third Floor

Total area (approx.): 68.3 sq. m (736.2 sq. ft)
Balcony : 6.7 sq. m (72.1 sq. ft)