



Lockwood Square, SE16

£475,000

Located moments from Bermondsey station & Southwark Park, this split level, 5th and 6th floor, three bedroom flat is immaculately presented and boasts great views, a modern kitchen & bathroom, large living space, ample storage, two large balconies & estate parking.

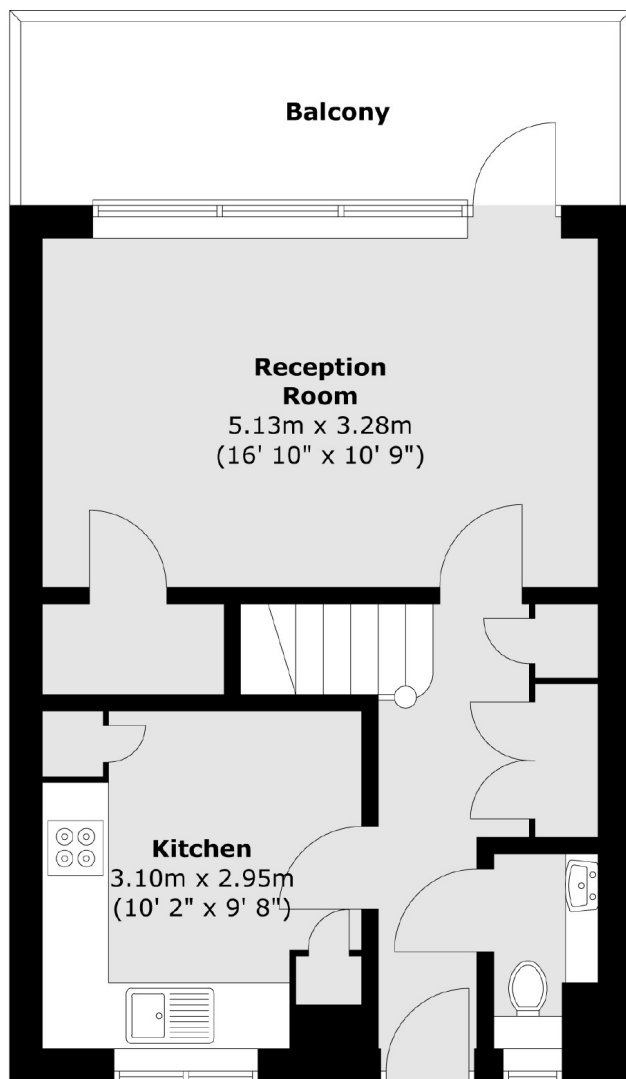
Lockwood Square is located only 0.2 miles from Bermondsey station. Southwark Park along with a wide range of artisan delis, shops and markets are close by.

Features

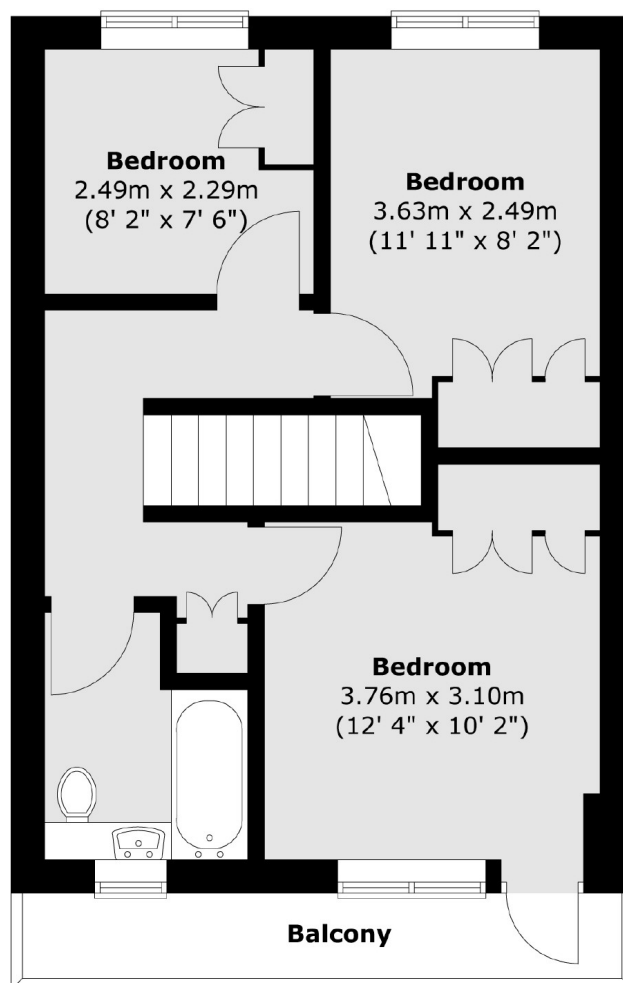
- Three Double Bedrooms
- Two Balconies
- Split Level
- Great Views
- Estate Parking Available
- Fantastic Condition
- Excellent Location

Lockwood Square, London, SE16

Fifth Floor



Sixth Floor



Total area (approx.) : 77.4 sq. m (833 sq. ft)
Total balcony area (approx.) : 12.9 sq. m (139 sq. ft)