

Winchester Square, SE1

£553 Per week

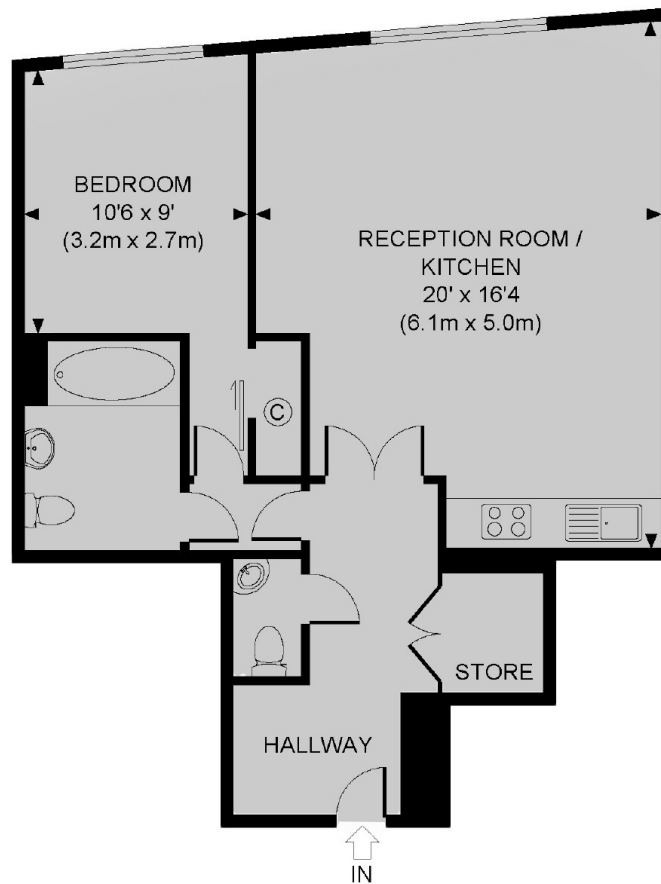
One bedroom modern apartment in a stylish development with open plan living and kitchen area. Wooden flooring throughout, great storage in the bedroom and hallway.

Situated at the back of Borough Market, the property looks over the entrance and is very close to London Bridge, the South's gateway to 'The City'.

Features

- One Bedroom
- Modern
- Stylish Development
- Open Plan Living
- Secure Entry
- Borough Market

Winchester Square, London, SE1



FIRST FLOOR

TENNIS COURT, SE1

TOTAL APPROX. FLOOR AREA 634 SQ. FT / 58.9 SQ. M

Dexters

London Bridge
54 Borough High Street
London
SE1 1XL

Lettings
020 7650 5101

Energy Rating: - We aim to make our particulars both accurate and reliable. However they are not guaranteed; nor do they form part of an offer or contract. If you require clarification on any points then please contact us, especially if you're traveling some distance to view. Please note that appliances and heating systems have not been tested and therefore no warranties can be given as to their good working order.

 **RICS** | Regulated
Estate Agent
and Letting Agent

dexters.co.uk