

Marine Street, SE16

£430,000

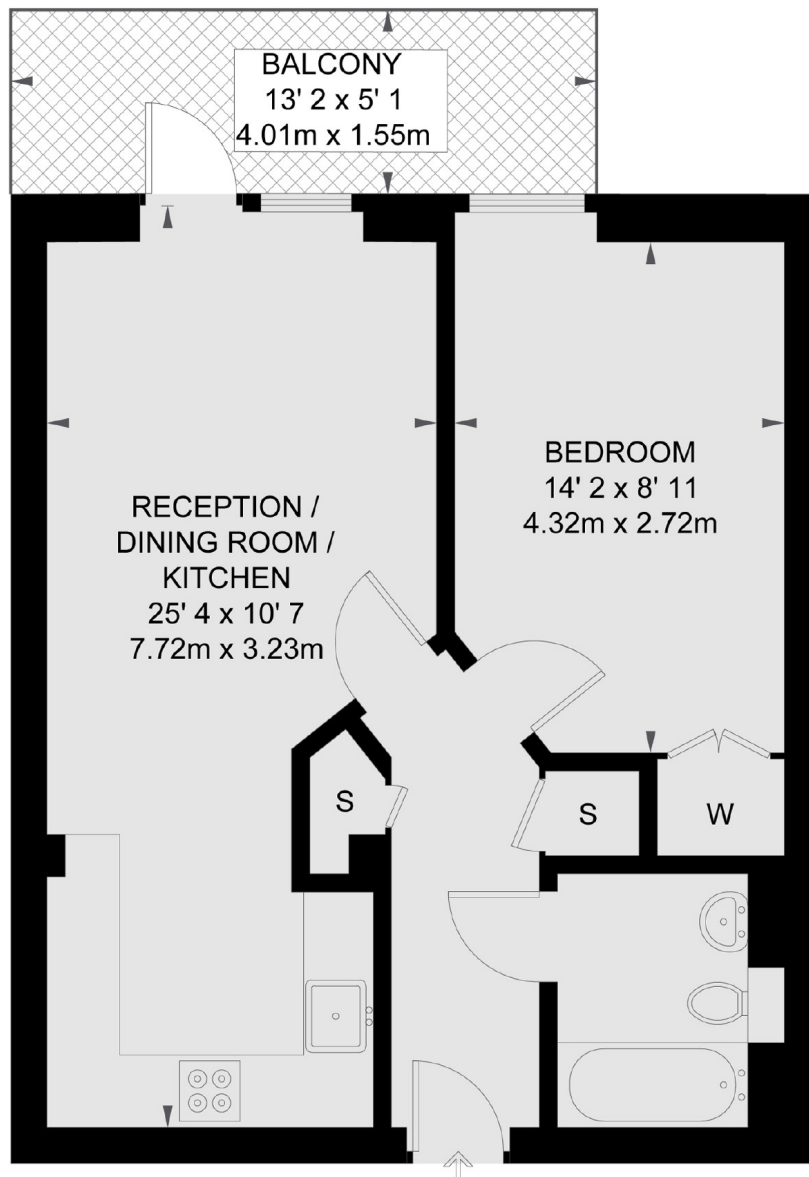
CASH BUYERS. Situated in this sought after development, this one double bedroom flat is in fantastic condition and has a large open plan kitchen living space, private balcony, ample storage and lots of natural light.

Eyot House is only 0.2 miles from Bermondsey station. Shad Thames, London Bridge, Maltby Street Market and a wide range of shops, cafés and restaurants are all close by.

Features

- One Double Bedroom
- Excellent Condition
- Private Balcony
- Communal Bike Storage
- Fantastic Location
- Long Lease

Marine Street, London, SE16



SECOND FLOOR

TOTAL APPROX. FLOOR AREA 507 SQ. FT. (47.1 SQ. M.)
TOTAL APPROX. BALCONY AREA 67 SQ. FT. (6.2 SQ. M.)