



Grange Road, SE1

£924,950

A remarkably spacious, over 1,500 sq ft, split level, Penthouse Apartment with a very large living space, kitchen and mezzanine level, a separate utility room, two large double bedrooms and two modern bathrooms, plus allocated parking.

Alaska Buildings is a landmark development situated within a short walk of Bermondsey street and Tower Bridge Road and within walking distance of both Bermondsey and London Bridge stations.

Features

Warehouse Style Apartment
Over 1,500 sq ft
Secure Allocated Parking
24 Hour Concierge
Communal Gardens
Share of Freehold



Grange Road, SE1

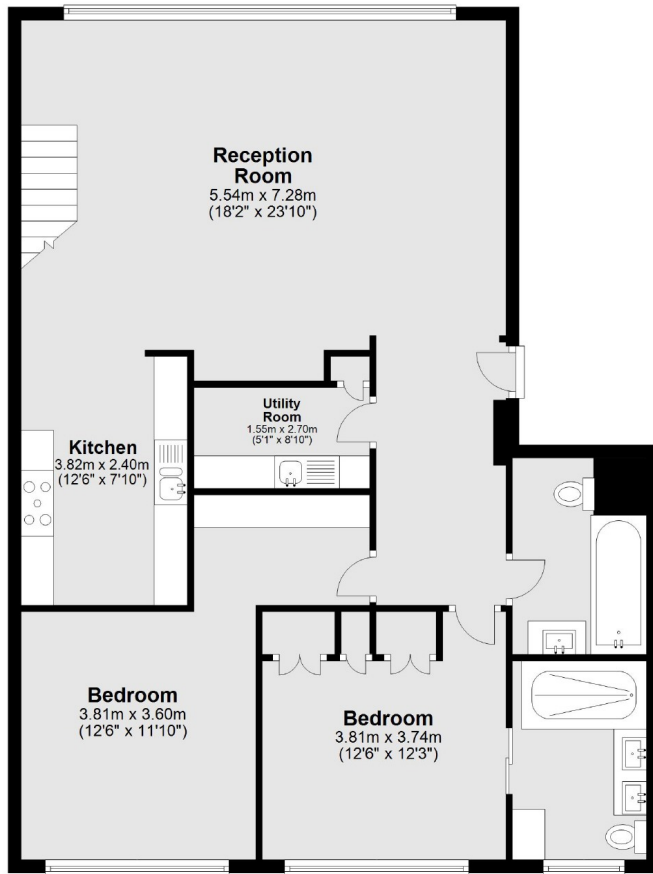
The Alaska Buildings is a very exclusive and secure, gated development, with a very hard to find community feel, a 24 hour concierge, underground parking and attractive communal water gardens.

With a share of freehold, the residents have much greater control of the day to day running of the building and the choice of managing agents.

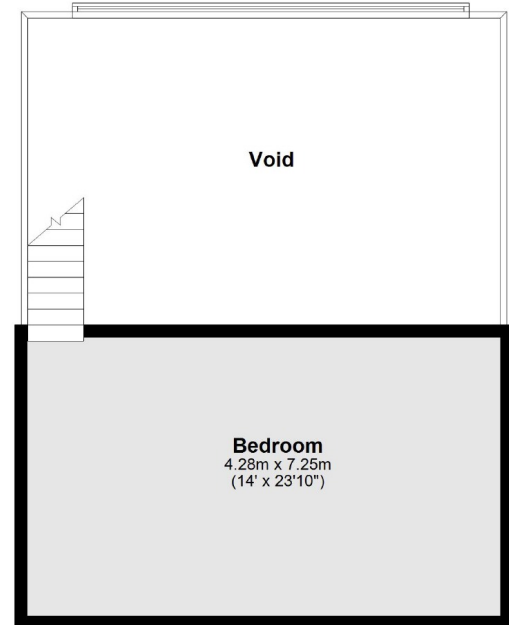


Grange Road, London, SE1

Third Floor



Mezzanine



Total area: approx. 140.3 sq. metres (1510.5 sq. feet)