



Arts Lane, SE16

£675,000

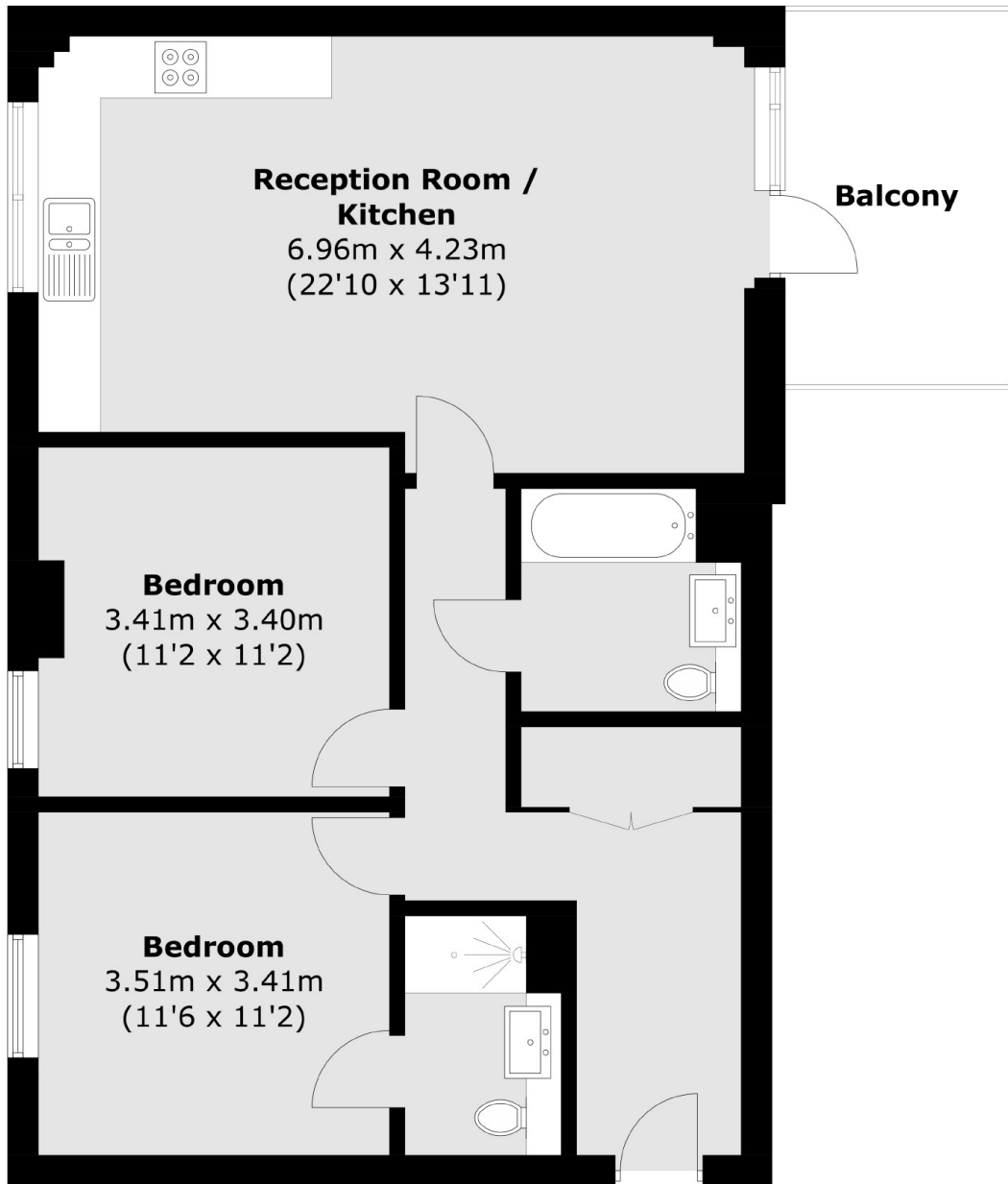
Situated within a sought after development, this immaculately presented two double bedroom flat boasts two bathrooms, ample storage, large open plan kitchen/living space, private balcony, gym and concierge facilities.

Costermonger Building is only 0.3 miles from Bermondsey station. A wide range of trendy cafés, shops and restaurants, including Bermondsey Street and Maltby Street Market, are within easy reach.

Features

- Two Double Bedrooms
- Two Bathrooms
- Large Private Balcony
- Excellent Condition
- Concierge & Gym Facilities
- Chain Free

Arts Lane, London, SE16



Total area (approx.): 75.0 sq. m (807.3 sq. ft)
Balcony area (approx.): 7.9 sq. m (85.0 sq. ft)

Dexters

London Bridge
54 Borough High Street
London
SE1 1XL
Sales
020 7650 5 100

Energy Rating: - We aim to make our particulars both accurate and reliable. However they are not guaranteed; nor do they form part of an offer or contract. If you require clarification on any points then please contact us, especially if you're traveling some distance to view. Please note that appliances and heating systems have not been tested and therefore no warranties can be given as to their good working order.

 **RICS** | Regulated
Estate Agent
and Letting Agent

dexters.co.uk