



Borough High Street, SE1

£923 Per week

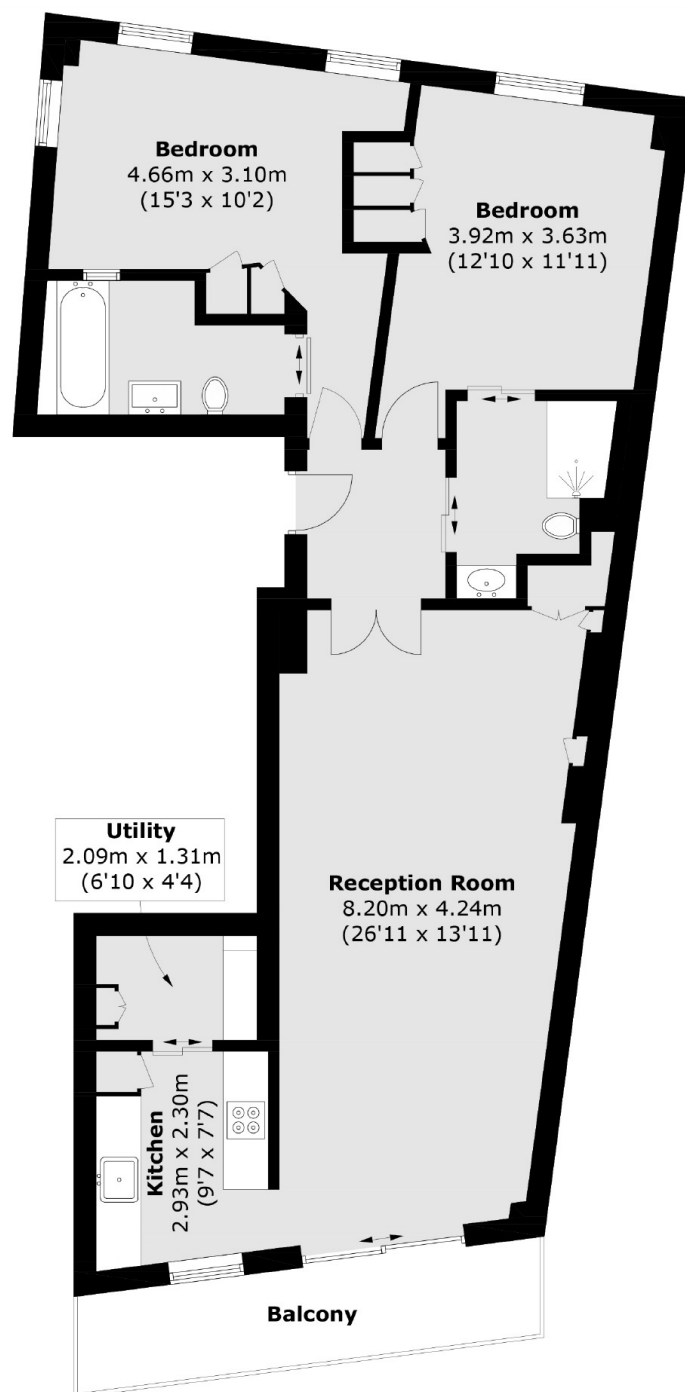
Large two bedroom, two bathroom apartment, finished to a high specification. This apartment has lots of natural light, modern fittings and a private terrace with views of the Shard.

Well located on the 'buzzy' Borough High Street. Close by you'll find the historic George Inn pub, London Bridge and the ever popular Borough Market.

Features

- Two Bedrooms
- Two Bathrooms
- Air Conditioning
- High Spec
- Shard Views

Borough High Street, London, SE1



Total area (approx.): 90.1 sq. m (969.8 sq. ft)
Balcony area (approx.): 8.0 sq. m (86.1 sq. ft)