



## Sumner Street, SE1

£750 Per week

Well presented two bedroom, two bathroom apartment on the 5th floor of this popular riverside development. Offered in excellent internal condition, the apartment features an open-plan living room with floor to ceiling windows, wood flooring and excellent storage.

Conveniently located for transport in a rapidly evolving area close to the Tate Modern, the River Thames and Borough Market. Blackfriars and London Bridge offer easy access to the City.

### Features

- Two Bedrooms
- Two Bathrooms
- Recently refurbished.
- Modern Development
- On Site Concierge
- Great Location

# Sumner Street, London, SE1

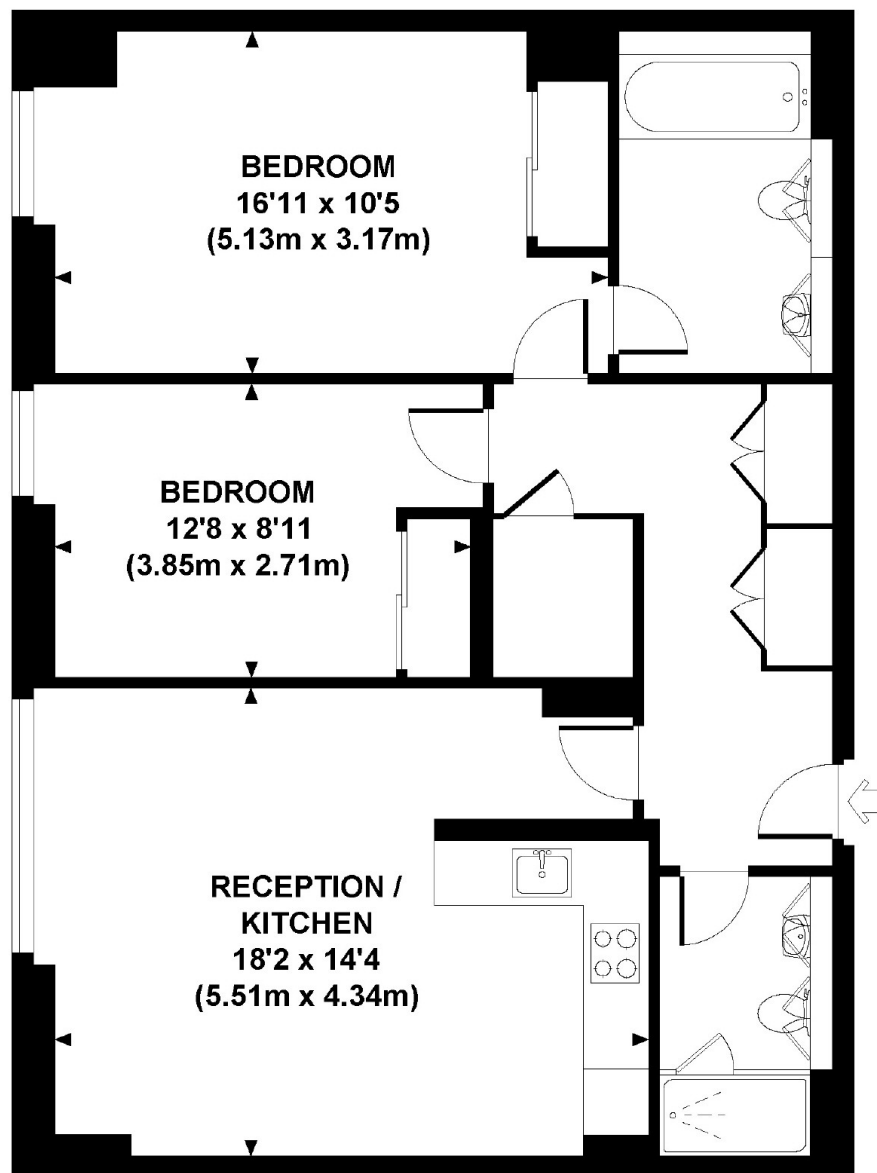
## NEO BANKSIDE, SUMNER STREET, SE1

Approx. gross internal area

815 Sq Ft / 75.7 Sq M.

Representation of current layout

Not to scale.



FIFTH FLOOR