

Rotherhithe Street, SE16

£350,000

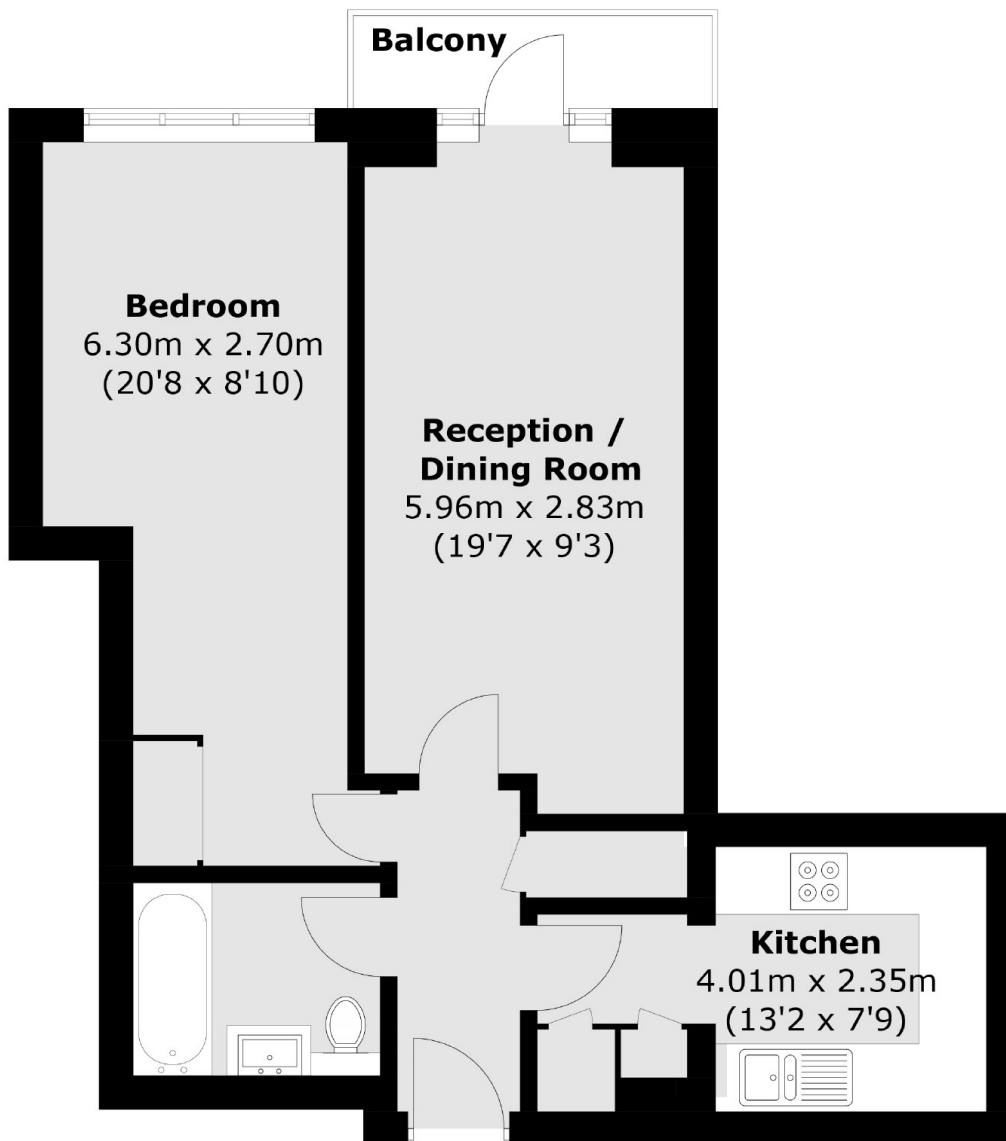
Offering views of the river, this one double bedroom flat is immaculately presented and boasts a large living space, separate kitchen, modern bathroom, private balcony and an allocated parking space. The development offers concierge and swimming pool facilities.

Located just 0.6 miles from Rotherhithe station and 0.8 miles from Canada Water. Windsor Court is surrounded by shops, cafés and riverside pubs and restaurants.

Features

- One Double Bedroom
- River View
- Private Balcony
- Excellent Condition
- Concierge & Swimming Pool
- Secure Underground Parking

Rotherhithe Street, London, SE16



Total area (approx.): 50.5 sq. m (543.6 sq. ft)
Balcony area (approx.): 2.6 sq. m (28.0 sq. ft)