



## Rotherhithe Street, SE16

£695,000

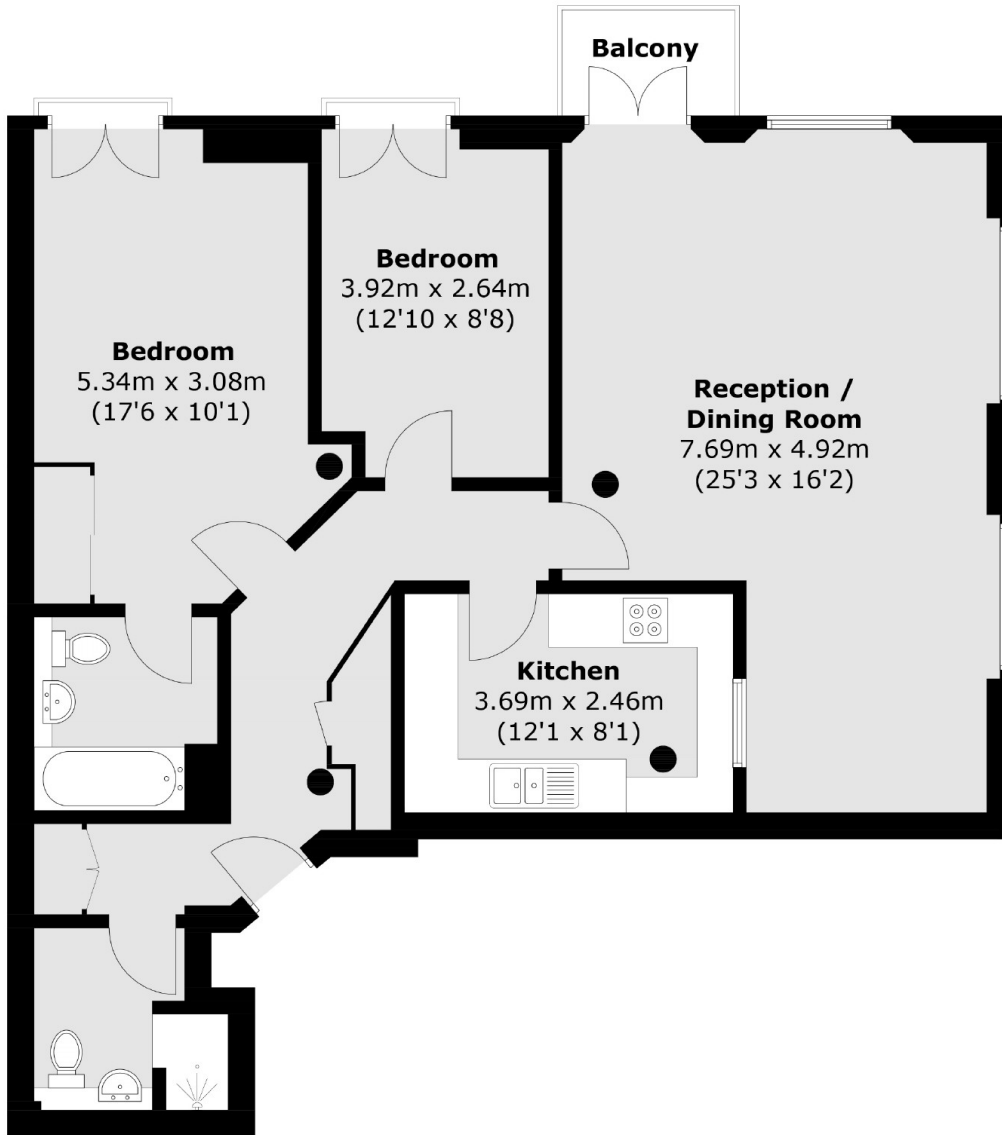
Offering stunning views of the river, this immaculately presented Warehouse Conversion with all of the original features boasts two double bedrooms, two modern bathrooms, large living space, parking, concierge, pool & gym facilities.

Surrounded by excellent restaurants, café's and shops, Globe Wharf is situated on the river and is moments away from several parks and green spaces. Rotherhithe station is 0.6 miles away and Canada Water is 0.8 miles away.

### Features

- Two Double Bedrooms
- Warehouse Conversion
- River Facing
- Concierge, Gym and Pool
- Share Of The Freehold
- Off-Street parking

Rotherhithe Street,  
London, SE16



Total area (approx.): 90.0 sq. m (968.8 sq. ft)  
Balcony: 2.3 sq. m (24.7 sq. ft)