



## Sun Passage, SE16

£510,000

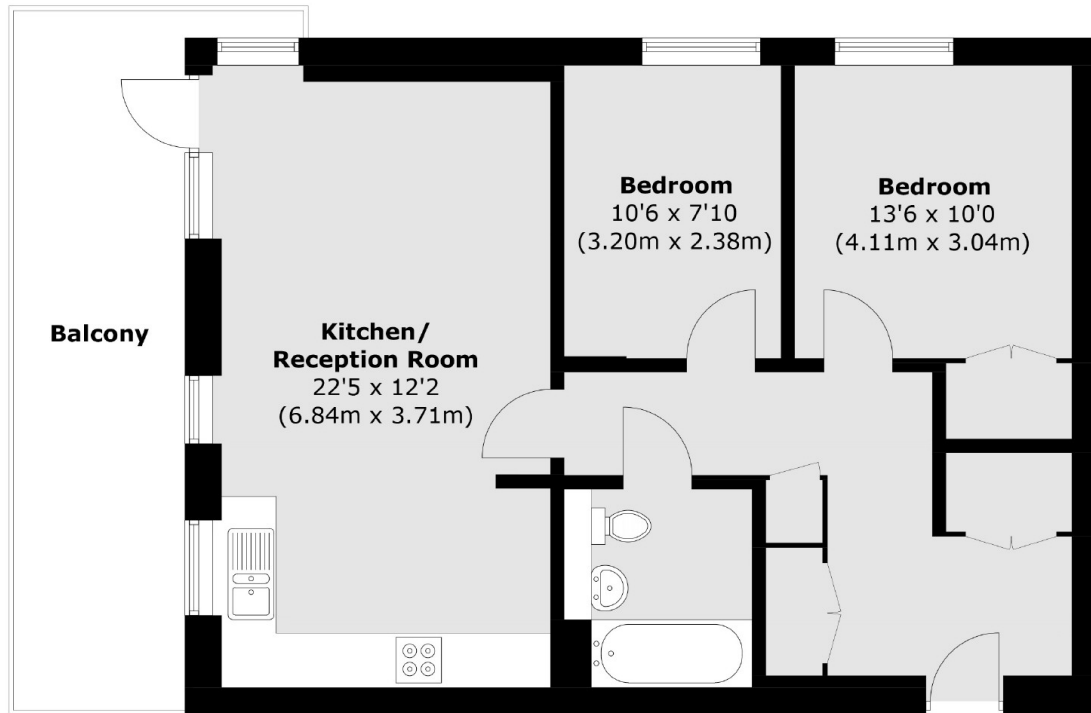
Situated moments from Bermondsey station, this two double bedroom flat is in fantastic condition and has a large open plan kitchen living space, private balcony, ample storage and lots of natural light.

Prospect House is only 0.2 miles from Bermondsey station. Shad Thames, London Bridge, Maltby Street Market, Bermondsey Street and a wide range of shops, cafés and restaurants are all close by.

### Features

- Two Double Bedrooms
- Excellent Location
- Private Balcony
- Communal Bike Storage
- Long Lease
- Valid EWS1 Form

# Sun Passage, London, SE16



Total area (approx.): 64.1 sq. m (670.0 sq. ft)