



Lant Street, SE1

£485,000

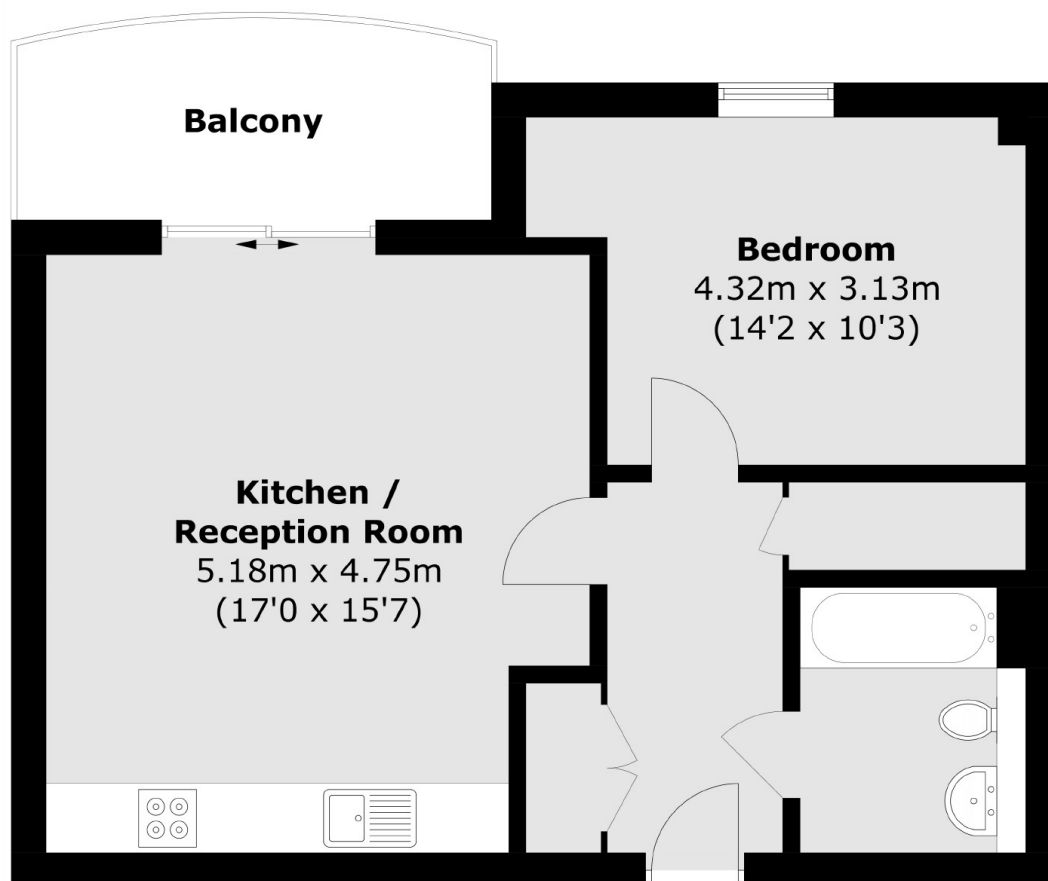
A highly attractive top floor apartment with a large private balcony and attractive views, an open plan kitchen/ living room, with high ceilings, a generous double bedroom, ample built-in storage and sold with secure off-street parking. This is a chain free sale.

The Rise on Lant Street is incredibly well located, tucked behind Borough Underground at the foot of Borough High Street, with London Bridge, Borough Market, the Shard and South Bank all moments away.

Features

- Open Plan Kitchen & Living Room
- Large Private Balcony
- Very Central Location
- Secure Entry System
- Excellent Transport Links
- Allocated Underground Parking
- Chain Free Sale

Lant Street,
London, SE1



Total area (approx.): 49.4 sq. m (531.7 sq. ft)
Balcony area (approx.): 6.8 sq. m (73.2 sq. ft)

Dexters

London Bridge
54 Borough High Street
London
SE1 1XL
Sales
020 7650 5 100

Energy Rating: C. We aim to make our particulars both accurate and reliable. However they are not guaranteed; nor do they form part of an offer or contract. If you require clarification on any points then please contact us, especially if you're traveling some distance to view. Please note that appliances and heating systems have not been tested and therefore no warranties can be given as to their good working order.

 **RICS** | Regulated
Estate Agent
and Letting Agent

dexters.co.uk