



Webber Street, SE1

£665,000

An immaculately presented 6th floor apartment with fantastic skyline views, an open plan kitchen and living room, private balcony, two double bedrooms, ample storage, modern bathroom, high quality wooden floors, 24 hour concierge and communal courtyard.

Webber Street is found in the heart of SE1, between Borough, Southwark and London Bridge stations, with easy access to the Southbank, Borough Market, various other attractions including the Tate Modern, Globe Theatre, and many schools

Features

- Stunning Skyline Views
- Immaculate Condition
- Long Lease - 109 Years
- 24/7 Concierge & Communal Garden
- Secure bicycle parking
- EWS1 A1 Compliant
- Chain Free



Webber Street, SE1

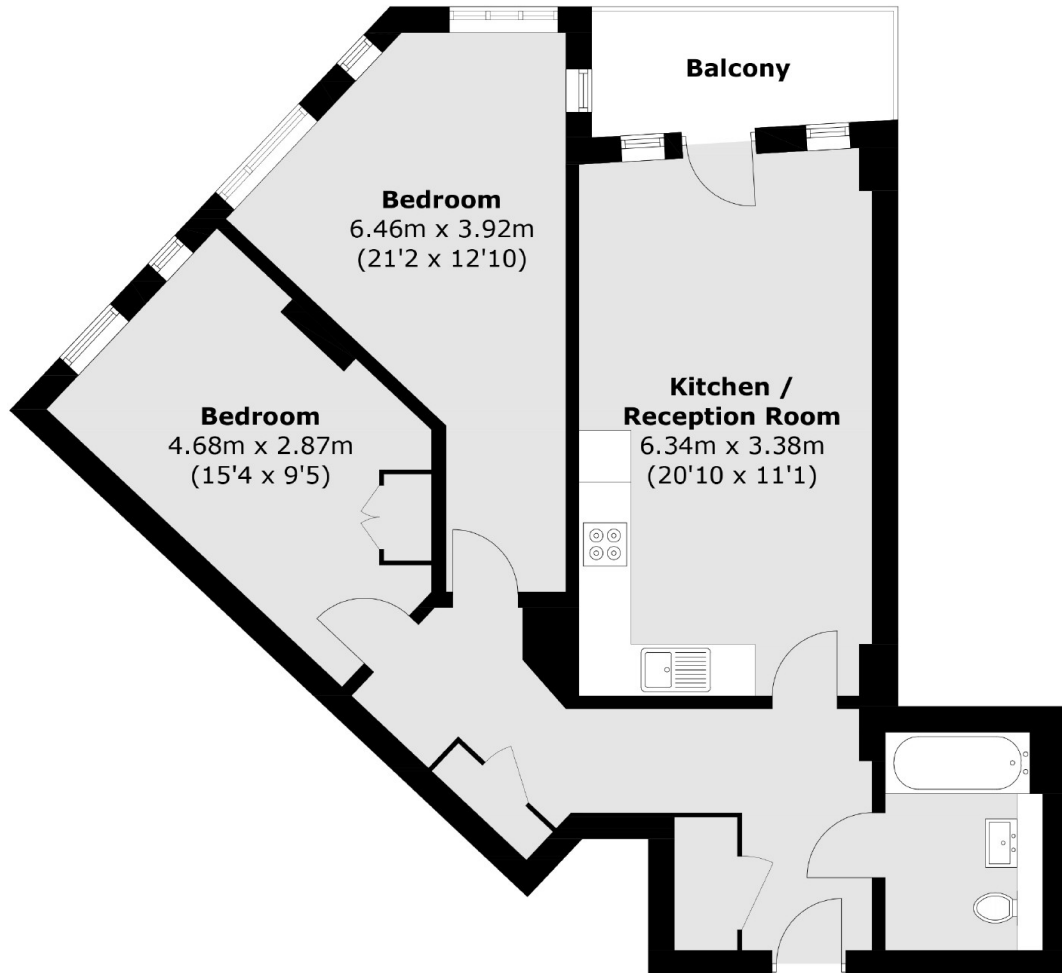
The apartment benefits from excellent natural light thanks to full height windows in every room. The main living space opens out onto the balcony with stunning views from east to west.

The kitchen is fully fitted with a Bosch induction hob, and modern integrated appliances. There is high quality wooden flooring throughout. Both bedrooms are good doubles with ample space and built-in storage.

MyBase is a very well kept and secure development with a 24 hour concierge service, residents' bike storage and a large communal courtyard. The building has recently undergone extensive works to the cladding and has a EWS1 A1 rating.



Webber Street, London, SE1



Total area (approx.): 69.4 sq. m (747.0 sq. ft)
Balcony area : 4.7 sq. m (50.6 sq. ft)