



Lant Street, SE1

£675,000

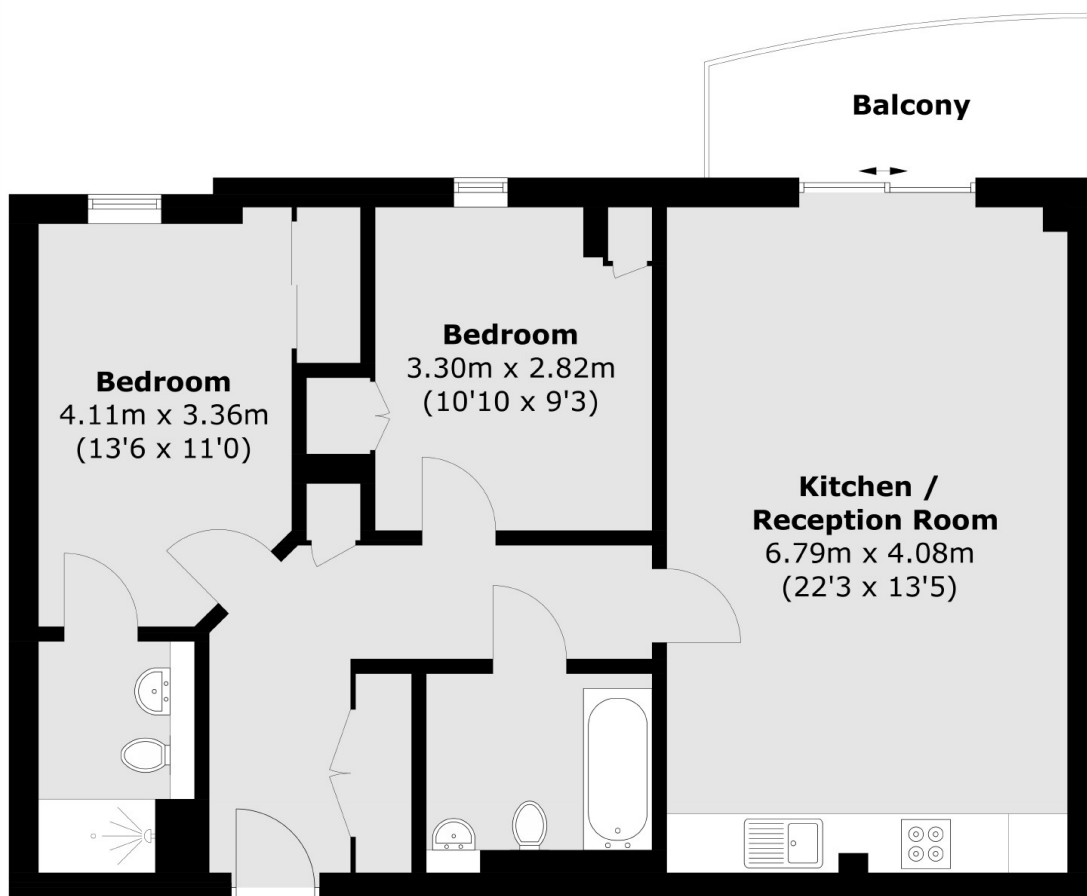
A highly attractive two double bedroom apartment with an open plan kitchen/ living room, a private west-facing balcony, ample storage and two bathrooms, one of which is en-suite. Sold chain free.

The Rise on Lant Street is incredibly well located, tucked behind Borough Underground at the foot of Borough High Street, with London Bridge, Borough Market, the Shard and South Bank all moments away.

Features

- Two Double Bedrooms
- Two Bathrooms
- Open Plan Kitchen & Living Room
- Private West-Facing Balcony
- Very Central Location
- Chain Free Sale

Lant Street,
London, SE1



Total area (approx.): 71.2 sq. m (766.4 sq. ft)
Balcony : 5.7 sq. m (61.3 sq. ft)

Dexters

London Bridge
54 Borough High Street
London
SE1 1XL
Sales
020 7650 5 100

Energy Rating: . We aim to make our particulars both accurate and reliable. However they are not guaranteed; nor do they form part of an offer or contract. If you require clarification on any points then please contact us, especially if you're traveling some distance to view. Please note that appliances and heating systems have not been tested and therefore no warranties can be given as to their good working order.

 **RICS** | Regulated
Estate Agent
and Letting Agent

dexters.co.uk