



Staple Street, SE1

£420,000

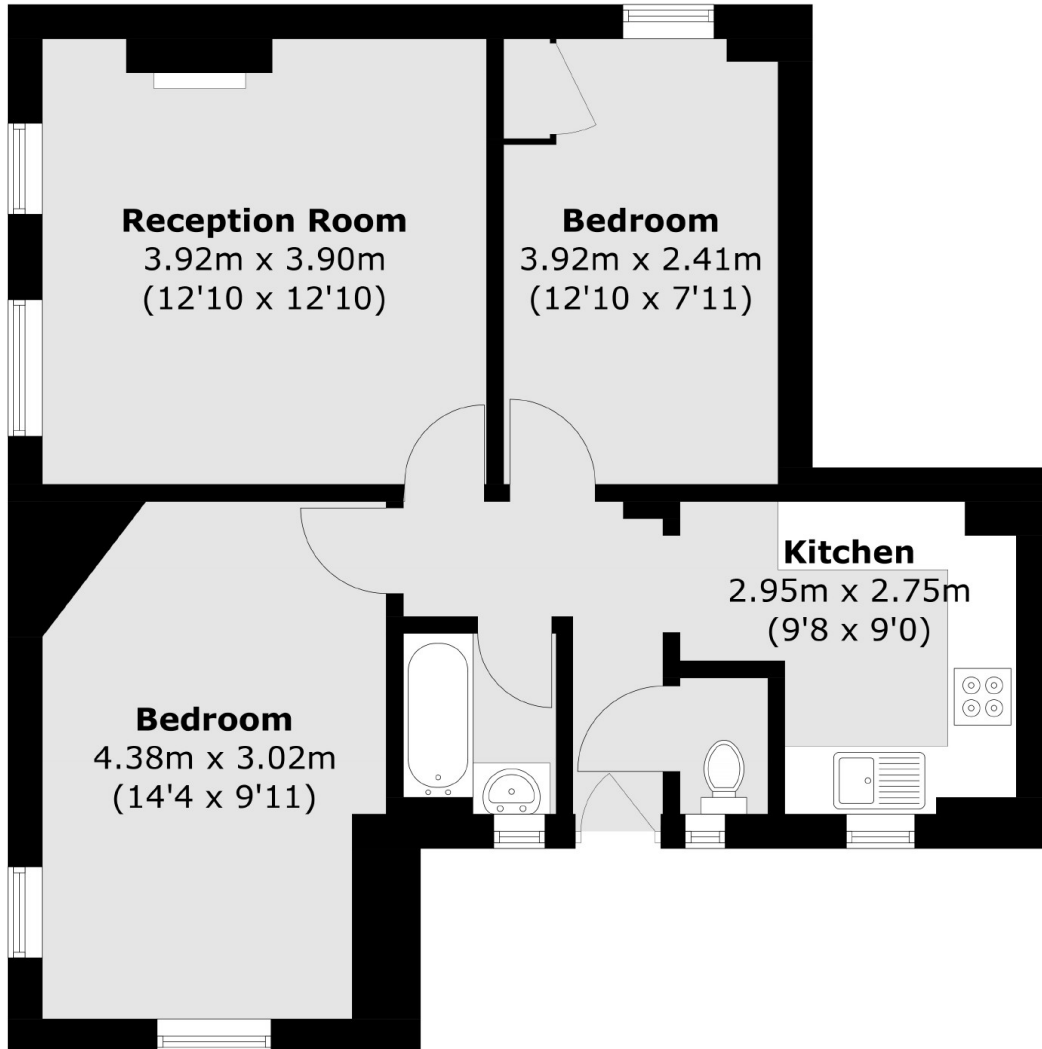
An attractive ground floor flat, requiring refurbishment, with a separate kitchen and a spacious living room, two generous double bedrooms, bathroom and WC. This is a chain free sale with permit parking available.

Staple Street a very quiet side street, enviably located in the heart of SE1, beside Tabard Gardens. There are numerous amenities in the vicinity within easy reach of Borough Market & the South Bank, via Borough High Street. Both London Bridge & Borough stations are close by.

Features

- Two Double Bedrooms
- Quiet Side Street
- Original Floor Boards
- Permit Parking
- Chain Free Sale

Staple Street,
London, SE1



Total area (approx.): 55.3 sq. m (595.2 sq. ft)