



Webber Street, SE1

£550,000

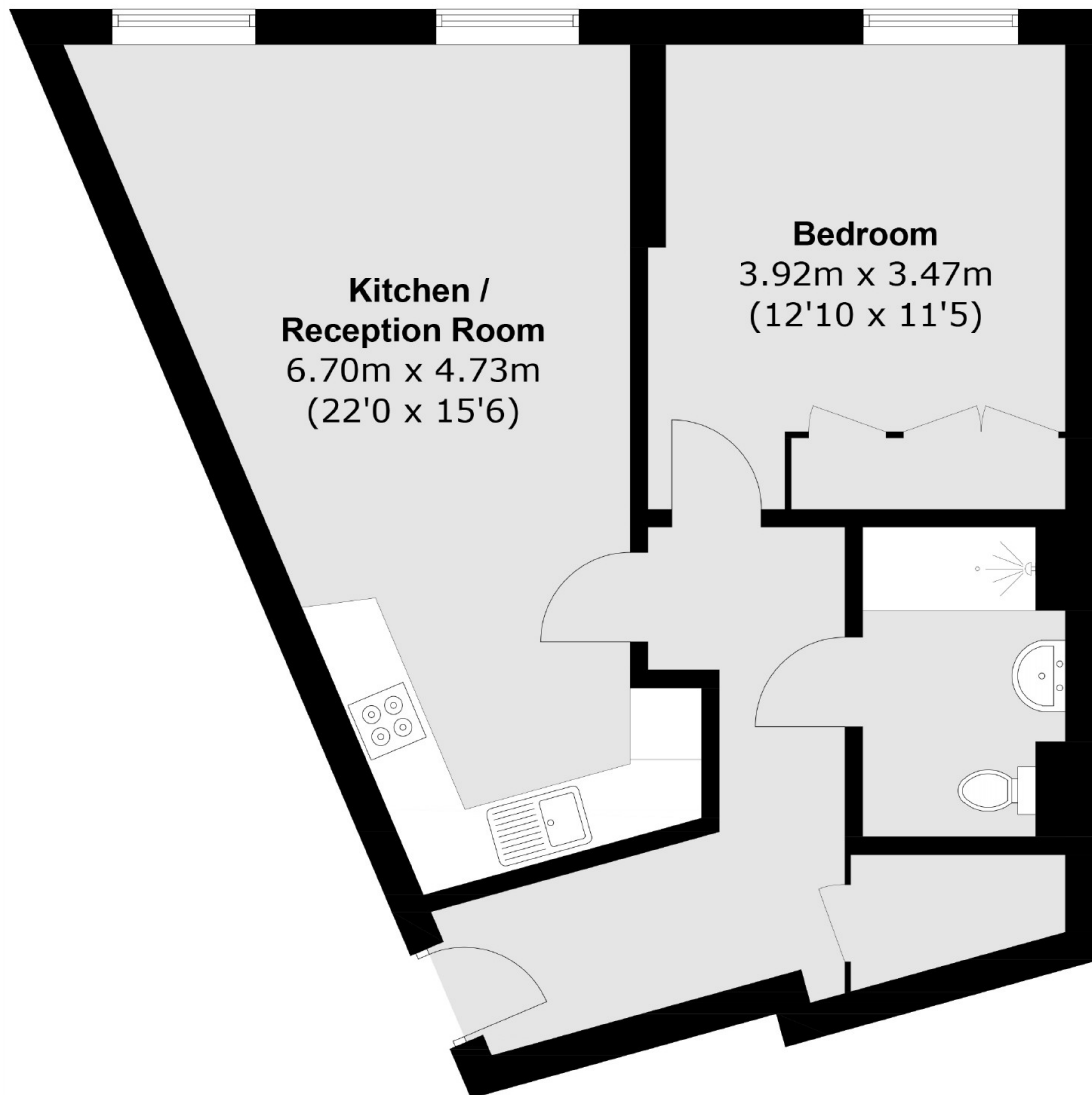
A very high spec modern apartment, within the original Granary Building of Valentine Place, with wonderful sash windows, an abundance of natural light, an open plan living room, three piece bathroom and a large double bedroom, with ample storage.

Valentine Place is tucked behind Blackfriars Road, within easy reach of Waterloo, Southwark and Blackfriars Stations. On your doorstep you will find the Cut, Lower Marsh, and the Southbank.

Features

- Open Plan Living
- Under floor heating
- Large Sash Windows
- High Ceilings
- Communal Courtyard
- Chain Free Sale

Webber Street,
London, SE1



Total area (approx.): 53.6 sq. m (576.9 sq. ft)

Dexters

London Bridge
54 Borough High Street
London
SE1 1XL
Sales
020 7650 5 100

Energy Rating: B. We aim to make our particulars both accurate and reliable. However they are not guaranteed; nor do they form part of an offer or contract. If you require clarification on any points then please contact us, especially if you're traveling some distance to view. Please note that appliances and heating systems have not been tested and therefore no warranties can be given as to their good working order.

 **RICS** | Regulated
Estate Agent
and Letting Agent

dexters.co.uk