



## Green Walk, SE1

£634 Per week

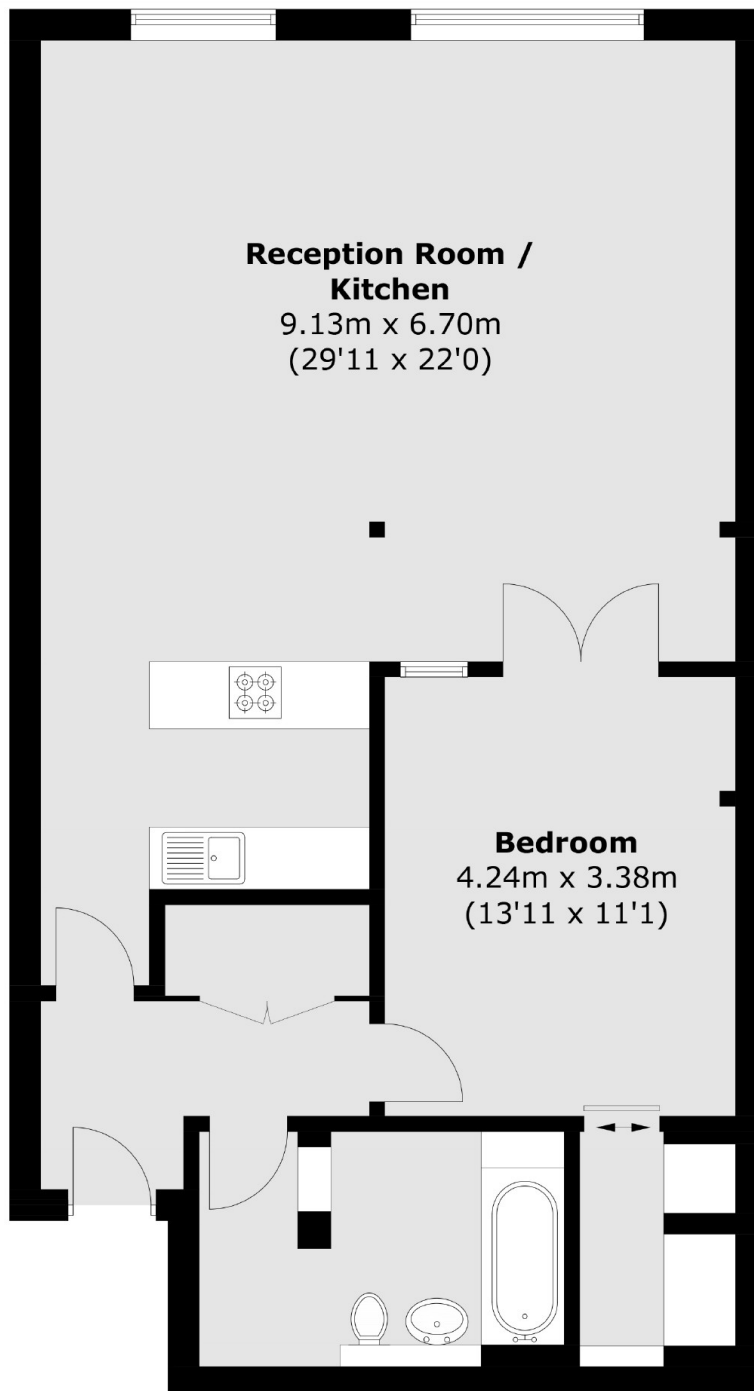
One bed apartment with stunning views of London Skyline. Features a large open plan living space and kitchen with huge windows, a large double bedroom with a walking wardrobe, a three piece bathroom suite and hard wood flooring throughout.

The Jam Factory is located close to Bermondsey Square and Bermondsey street, with its independent shops, bars and restaurants, The nearest stations are London Bridge and Borough.

### Features

- Amazing loft style apartment
- Fantastic Location
- Superb Development
- Almost 900sqft
- On-Site Concierge
- Stunning Views

# Green Walk, London, SE1



Total area (approx.): 83.3 sq. m (896.6 sq. ft)

## Dexters

London Bridge  
54 Borough High Street  
London  
SE1 1XL  
Lettings  
020 7650 5101

Energy Rating: B. We aim to make our particulars both accurate and reliable. However they are not guaranteed; nor do they form part of an offer or contract. If you require clarification on any points then please contact us, especially if you're traveling some distance to view. Please note that appliances and heating systems have not been tested and therefore no warranties can be given as to their good working order.

 **RICS** | Regulated  
Estate Agent  
and Letting Agent

[dexters.co.uk](http://dexters.co.uk)