



Southwark Bridge Road, SE1

£475,000

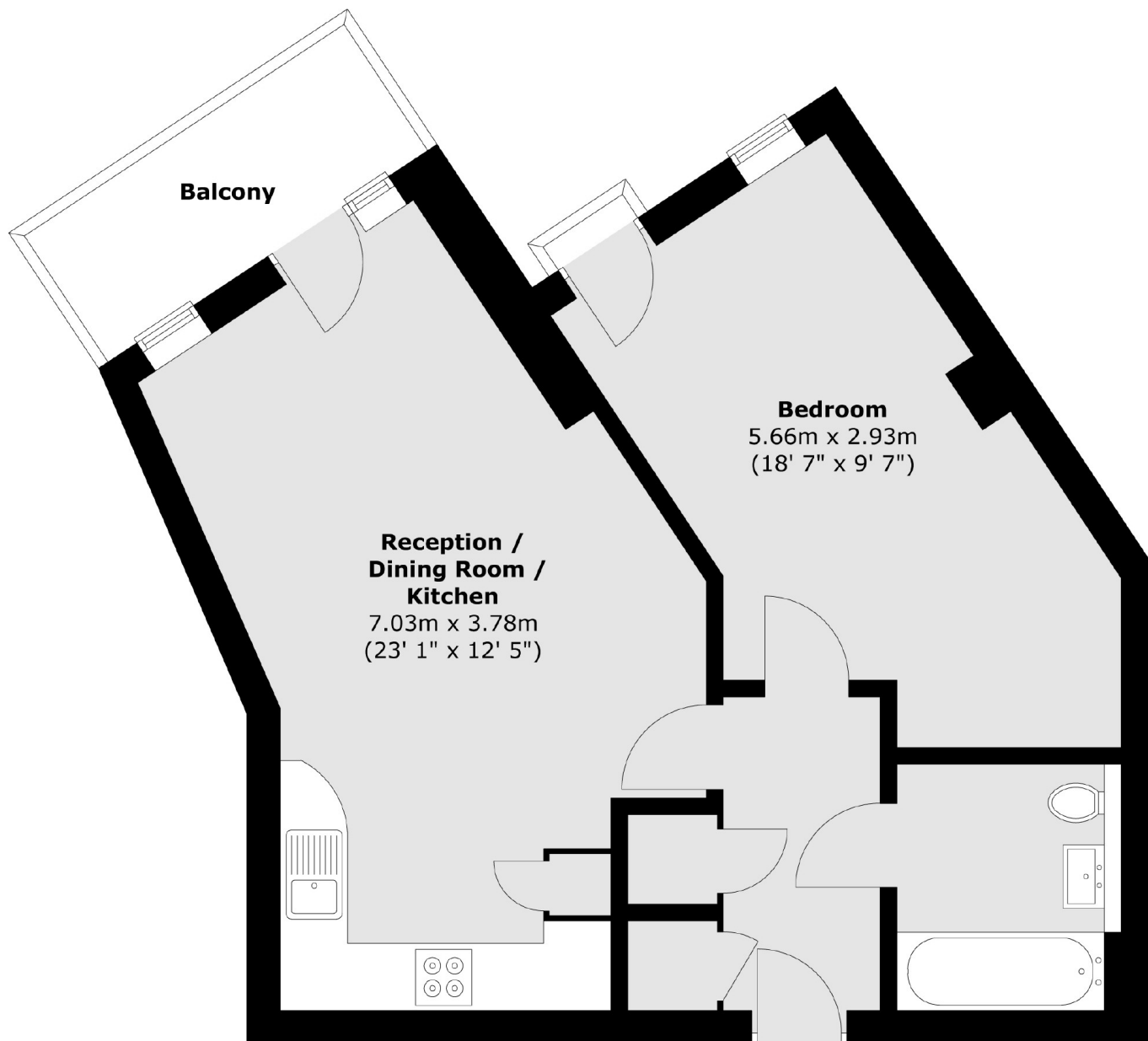
An attractive west-facing apartment in MyBase with an open plan kitchen/living room, leading onto a private balcony, overlooking the communal courtyard, a large double bedroom, a three piece bathroom and ample storage. The lease has been extended to 896 years.

Located in the heart of SE1, between Borough, Southwark, London Bridge and Elephant & Castle stations, with easy access to Bankside, Borough Market, Tate Modern & Globe Theatre. Westminster and the City are both within easy reach.

Features

- Lease Extended to 896 Years
- Secure Entry & Lift Access
- Private Balcony
- Third Floor Floor
- EWS1 Compliant

Southwark Bridge Road, London, SE1



Total area (approx.) : 51.5 sq. m (554 sq. ft)
Total balcony area (approx.) : 4.3 sq. m (46 sq. ft)

Dexters

London Bridge
54 Borough High Street
London
SE1 1XL
Sales
020 7650 5 100

Energy Rating: C. We aim to make our particulars both accurate and reliable. However they are not guaranteed; nor do they form part of an offer or contract. If you require clarification on any points then please contact us, especially if you're traveling some distance to view. Please note that appliances and heating systems have not been tested and therefore no warranties can be given as to their good working order.

 **RICS** | Regulated
Estate Agent
and Letting Agent

dexters.co.uk