



## Redriff Road, SE16

£975,000

Situated on a leafy street, this four bedroom house is in fantastic condition throughout and boasts a large open plan kitchen/ living space, three modern bathrooms, utility room, ample storage and private garden.

Redriff Road is located only 0.2 miles from Surrey Quays station and 0.4 miles from Canada Water station offering fantastic transport links to all of London.

### Features

- Four Double Bedrooms
- Three Bathrooms
- Private Garden
- Fantastic Condition
- Excellent Location
- Chain Free





## Redriff Road, SE16

Arranged over three floors and spanning over 1,500sqft, the ground floor comprises of a large open plan kitchen and living area, utility room, guest WC and doors leading out to the private garden.

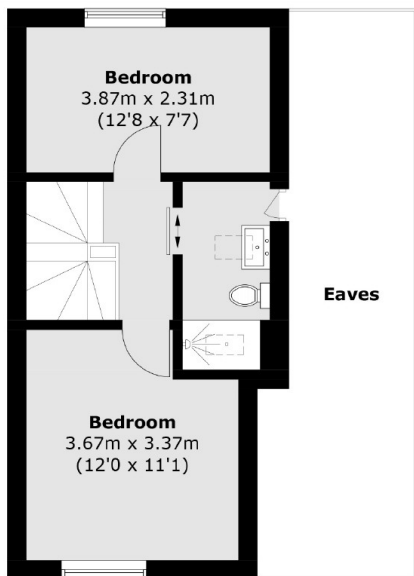
Four immaculate presented double bedrooms are split across the next two floors along with three beautifully refurbished bathrooms and lots of eaves storage.

Canada Water is ideally located moments from the river and is surrounded by a wide range of parks, shops, restaurants and cafés.

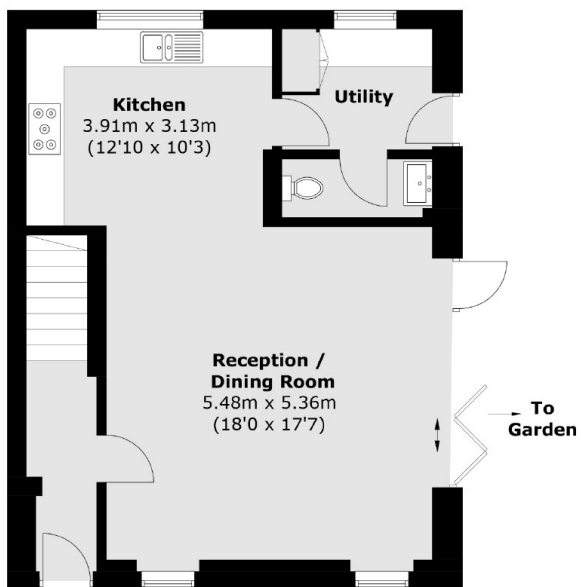




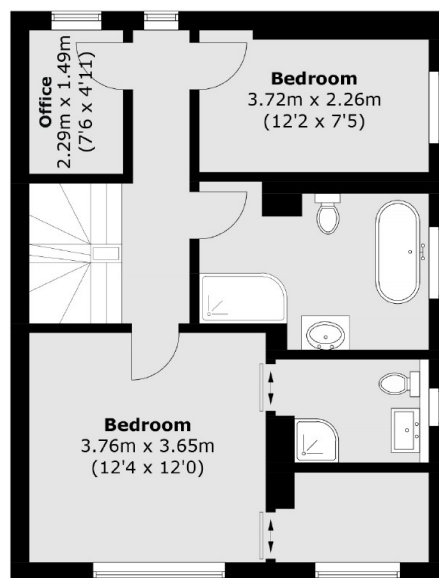
# Redriff Road, London, SE16



**Second Floor**



**Ground Floor**



**First Floor**

Total area (approx.): 142.1 sq. m (1,529.6 sq. ft)  
(Excluding Eaves)