



Blackfriars Road, SE1

£600,000

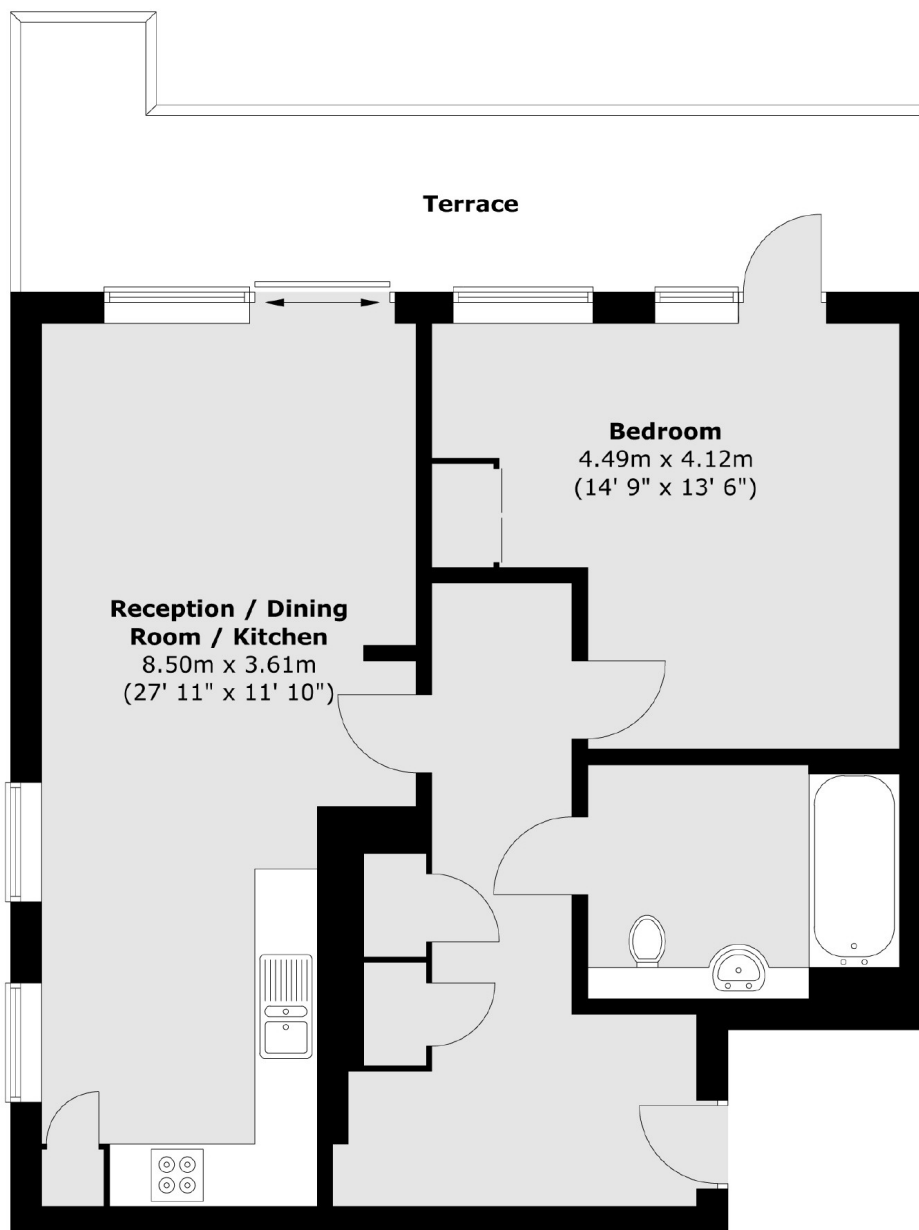
An immaculately presented modern apartment with a large hallway, a very spacious open plan living room and kitchen, leading out onto a large private terrace, a generous double bedroom, with ample space for storage and attractive skyline views. Offers in excess of £600,000

Moments from the Southbank, with the best of London's culture on your doorstep, boutique restaurants, the Globe Theatre, Old Vic & Tate Modern. Incredible transport links via Southwark, Blackfriars or Waterloo, with the City just over the bridge.

Features

- Offers in excess of £600,000
- Large Private Terrace
- Over 750 Sq Ft
- Fantastic Views
- 24 Hour Concierge
- Gym & Leisure Facilities

Blackfriars Road, London, SE1



Total area (approx.) : 67 sq. m (721 sq. ft)
Total terrace area (approx.) : 15.2 sq. m (164 sq. ft)