



## Blackfriars Road, SE1

### £241,500

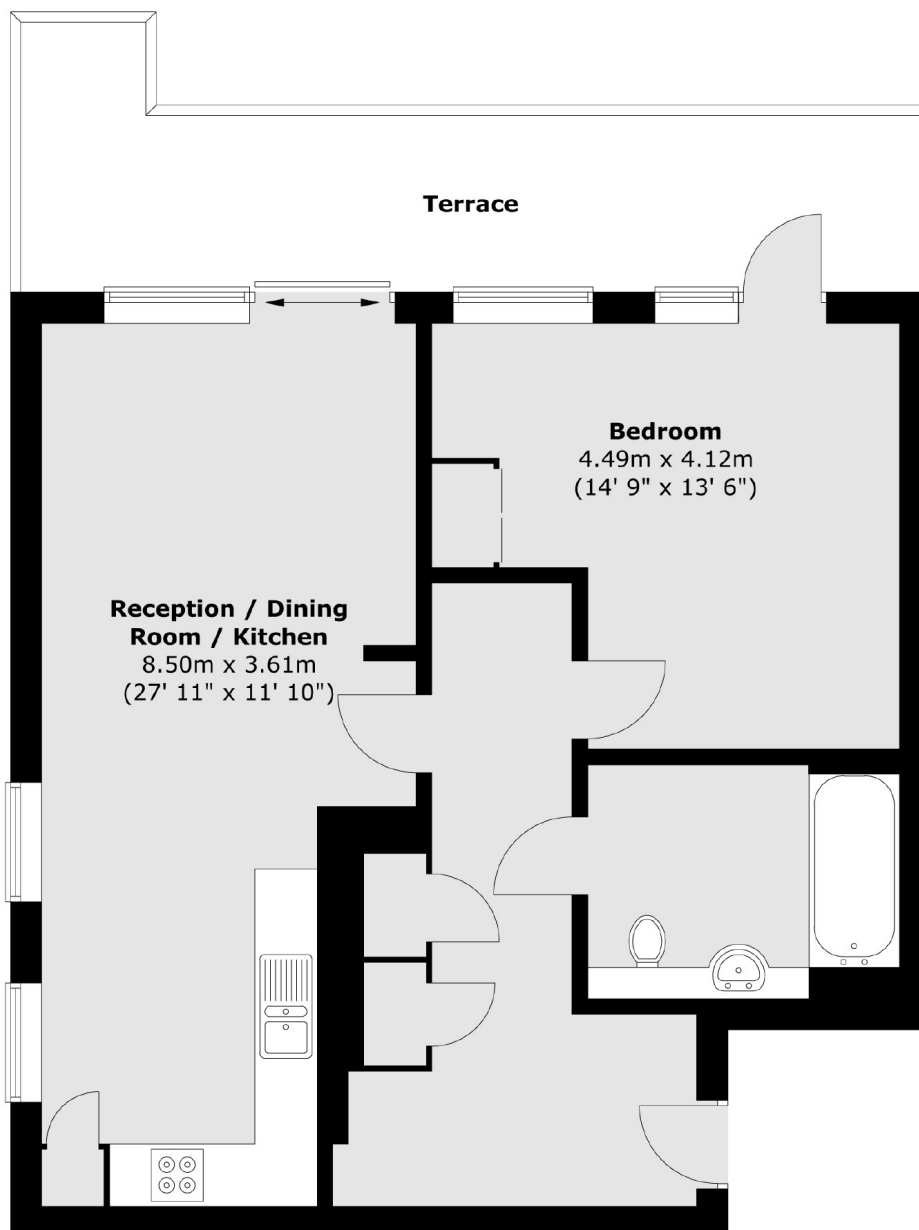
35% Shared Ownership. An immaculately presented apartment with a large hallway, a very spacious open plan living room and kitchen, leading out onto a large private terrace, a generous double bedroom, with ample space for storage and attractive skyline views.

Moments from the Southbank, with the best of London's culture on your doorstep, boutique restaurants, the Globe Theatre, Old Vic & Tate Modern. Incredible transport links via Southwark, Blackfriars or Waterloo, with the City just over the bridge.

### Features

- 35% Shared Ownership
- Monthly Rent: £795.31
- Monthly Service Charge: £332.45
- Large Private Terrace
- Over 750 Sq Ft
- Fantastic Views
- 24 Hour Concierge
- Gym & Facilities

# Blackfriars Road, London, SE1



Total area (approx.) : 67 sq. m (721 sq. ft)  
Total terrace area (approx.) : 15.2 sq. m (164 sq. ft)