



Bywater Place, SE16

£650,000

Offering spectacular views of the London skyline, this split level three double bedroom flat is immaculately presented and boasts a large living space, separate kitchen, two bathrooms, ample storage and parking.

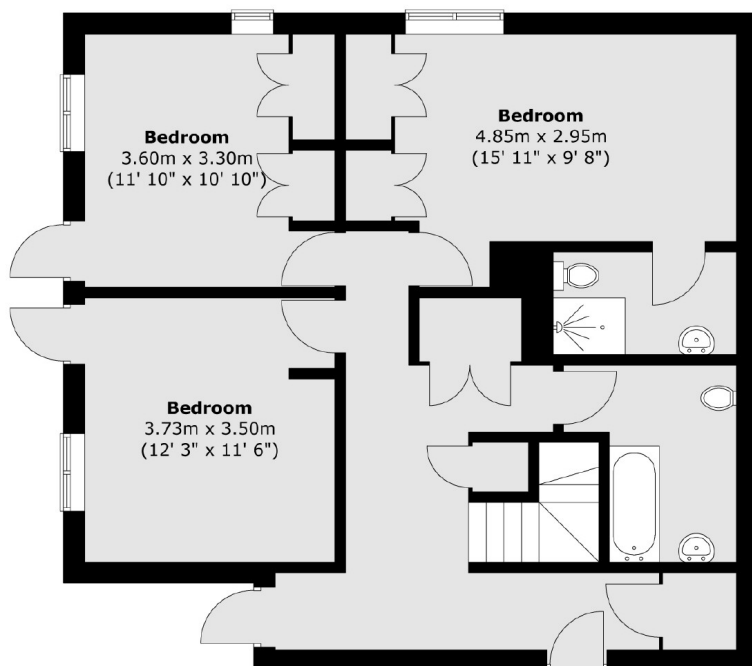
Located just 0.7 miles from Rotherhithe station and less than a mile from Canada Water, Bywater Place is moments from the river and is surrounded by shops, cafés and riverside pubs and restaurants.

Features

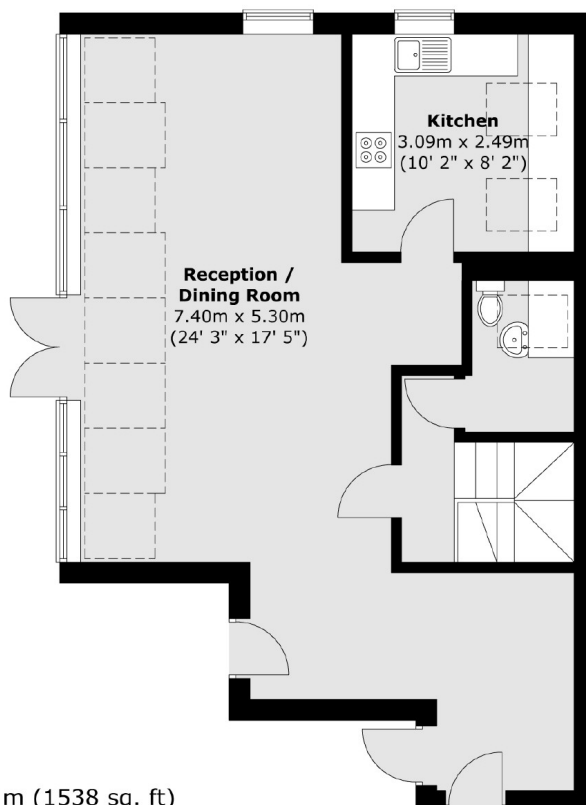
- Three Double Bedrooms
- Two Bathrooms
- Fantastic Condition
- Incredible Views
- Parking
- Chain Free
- OIEO £650,000

Bywater Place, London, SE16

Second Floor



Third Floor



Total area (approx.) : 142.9 sq. m (1538 sq. ft)