



Burbage Close, SE1

£350,000

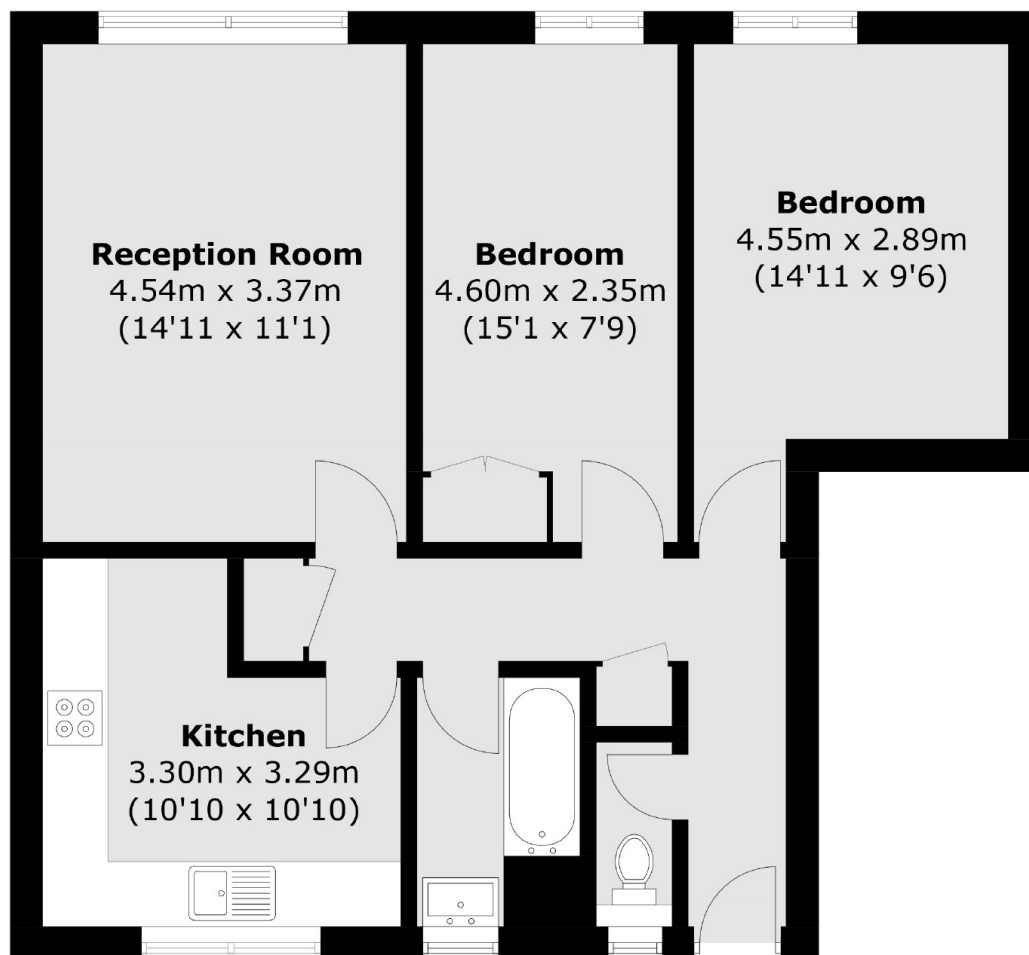
A highly attractive almost 700 sq ft, 6th floor flat with fantastic skyline views, a spacious living room, a separate eat-in kitchen, a three piece family bathroom, two double bedrooms and ample storage.

Burbage Close is enviably located, tucked back off Great Dover Street, moments from Tabard Gardens and Trinity Church Square. London Bridge and Borough Stations are both nearby, along with Borough Market and the South Bank.

Features

- Fantastic Views
- Two Double Bedrooms
- Separate Kitchen
- Spacious Living Room
- Lift Access & Secure Entry

Burbage Close,
London, SE1



Total area (approx.): 63.4 sq. m (682.4 sq. ft)