



Rothsay Street, SE1

£450,000

An attractive modern apartment, with a spacious open plan kitchen and living room, leading out onto a private west-facing balcony, with a generous double bedroom, ample storage and a three piece bathroom.

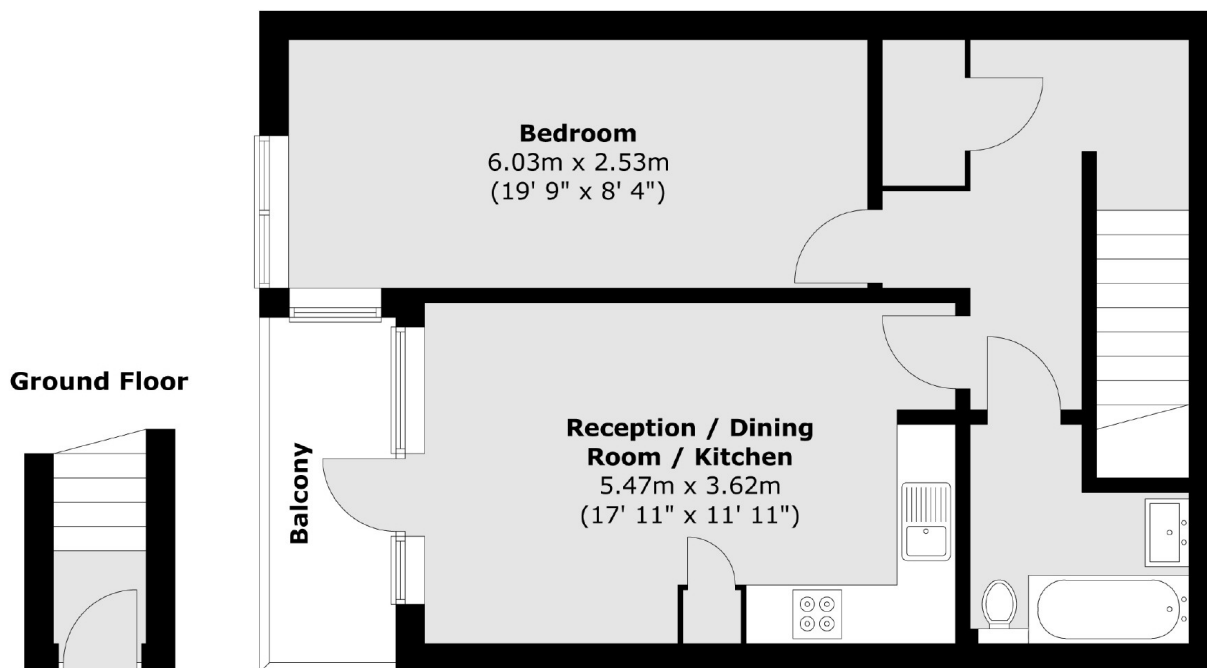
The Jam Factory is one of SE1's most desirable developments, set on Green Walk, moments from Bermondsey Street, with London Bridge, Borough Market & the Southbank just beyond.

Features

- One Double Bedroom
- Open Plan Living Space
- 24 Hour Concierge
- Large Private Balcony
- Chain Free Sale

Rothsay Street,
London, SE1

First Floor



Total area (approx.) : 54.5 sq. m (587 sq. ft)
Total balcony area (approx.) : 3.8 sq. m (41 sq. ft)