



## Coopers Road, SE1

£500,000

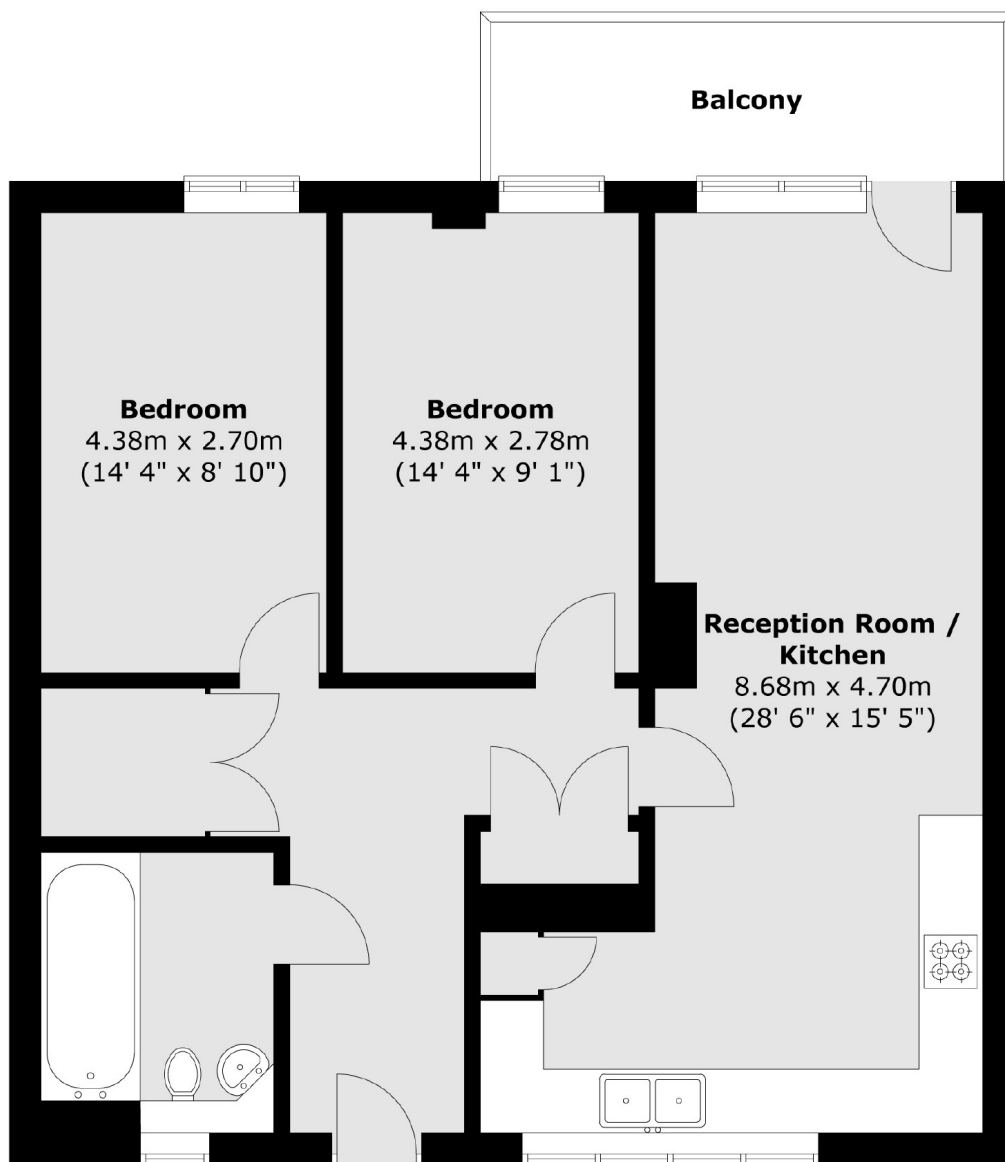
A smartly presented two double bedroom, third floor apartment, spread over 837 sq ft, with a smart, modern kitchen, set within a generous open plan living space, leading out onto a private balcony, plus ample storage & lift access.

Coopers Road is enviably located, set back off the Old Kent Road, with its numerous amenities. Burgess Park is a few moments away with transport links via Elephant & Castle, Bermondsey & South Bermondsey Stations and major bus routes nearby.

### Features

- Two Double Bedrooms
- Open Plan Living Room
- Private Balcony
- Third Floor Apartment
- Long Lease
- Over 800 sq ft

# Coopers Road, London, SE1



Total area (approx.) : 77.8 sq. m (837 sq. ft)  
Total balcony area (approx.) : 7.3 sq. m (78 sq. ft)