

Marine Street, SE16

£565,000

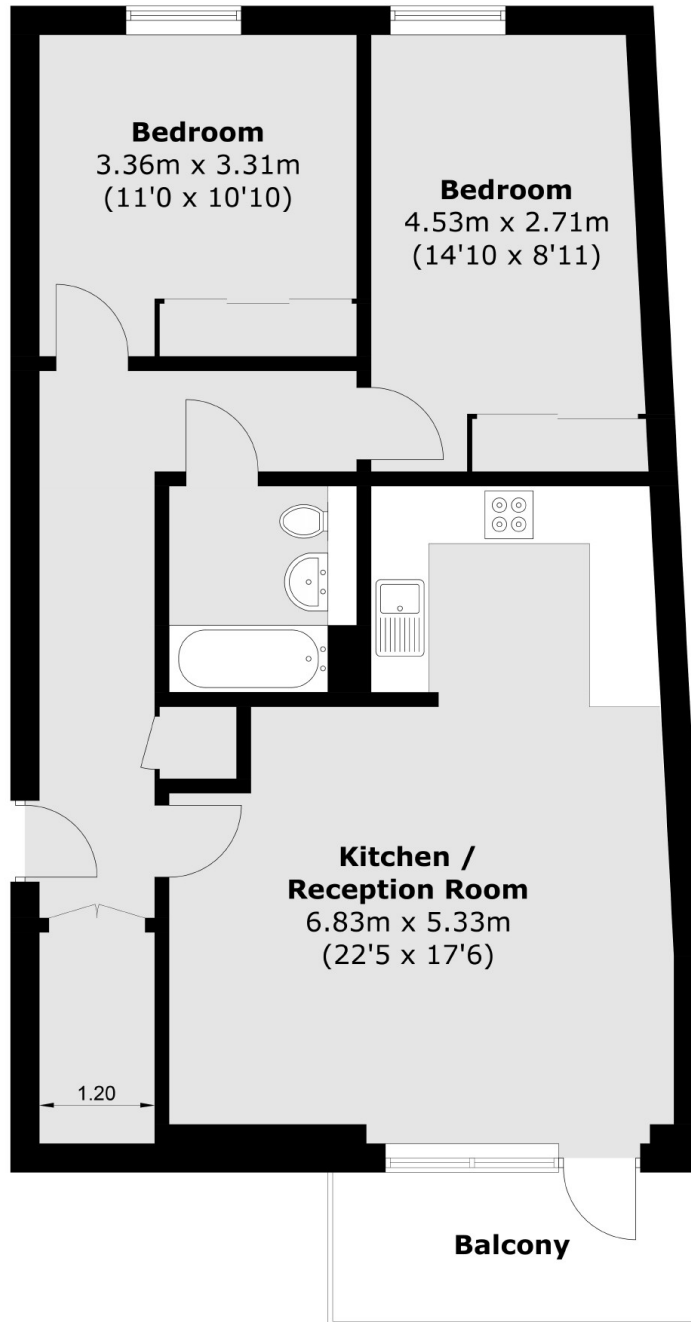
Situated on the third floor in this sought after development, this two double bedroom flat is in fantastic condition and has a large open plan kitchen living space, private South facing balcony, ample storage and lots of natural light.

Eyot House is only 0.2 miles from Bermondsey Station. Shad Thames, London Bridge, Maltby Street Market and a wide range of shops, cafés and restaurants are all close by.

Features

- Two Double Bedrooms
- Excellent Condition
- Private South Facing Balcony
- Communal Bike Storage
- Fantastic Location
- Long Lease

Marine Street, London, SE16



Total area (approx.): 74.1 sq. m (797.6 sq. ft)
Balcony: 5.9 sq. m (63.5 sq. ft)