



Bermondsey Wall East, SE16

£1,400,000

OIEO £1,400,000. Offering incredible views of Tower Bridge, The City, St Pauls and the river, this immaculately presented five bedroom house has been fully refurbished and offers, three bathrooms, three balconies, a private garden and ample storage.

Bermondsey Wall East is on the River Thames, only 0.2 miles from Bermondsey Station and 0.4 miles from Rotherhithe station offering excellent transport links to anywhere in London.

Features

- Five Bedrooms
- Three Bathrooms
- Freehold House
- Incredible Views
- Parking Available
- Excellent Condition



Bermondsey Wall East, SE16

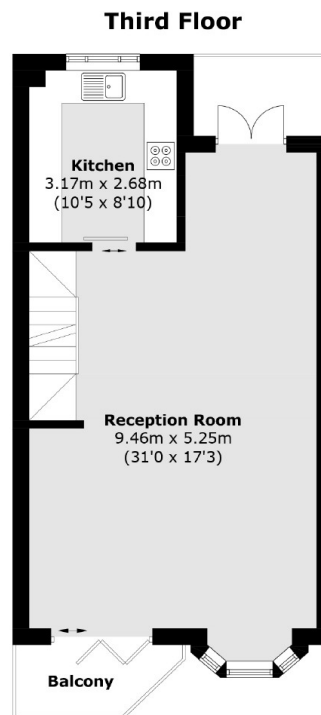
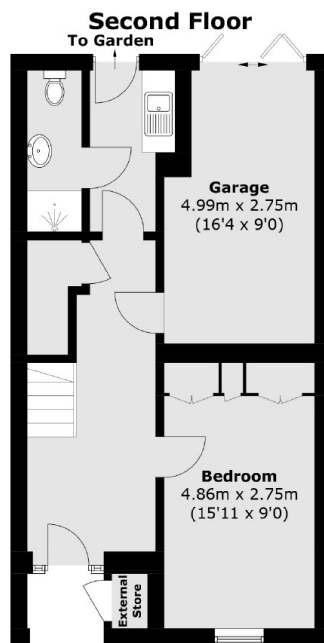
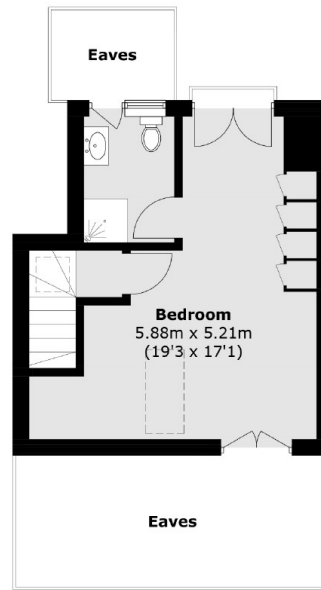
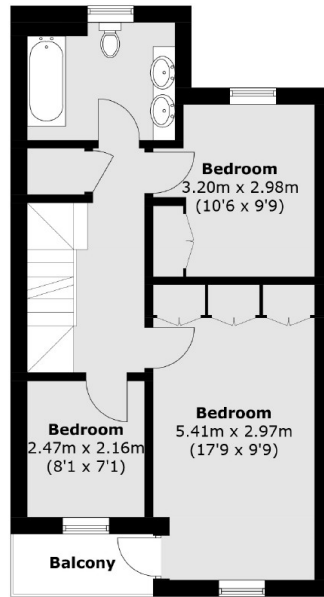
Arranged over four floors the house is beautifully decorated throughout. The house has large windows in every room and is flooded with natural light.

In addition the house offers five bedrooms along with three bathrooms and three balconies. The master bedroom has a balcony offering incredible view of the river, Tower Bridge and The City.

The house is in close proximity to the shops, deli's and restaurants of Shad Thames. Maltby Street Market and Bermondsey Street are also located moments away.



Bermondsey Wall East, London, SE16



Ground Floor
Total area (approx.): 177.6 sq. m (1,911.6 sq. ft)
External Store (approx.): 0.6 sq. m (6.4 sq. ft)
(Excluding Eaves)
Balconies (approx.): 9.8 sq. m (105.5 sq. ft)

First Floor