



## Borough High Street, SE1 £650,000

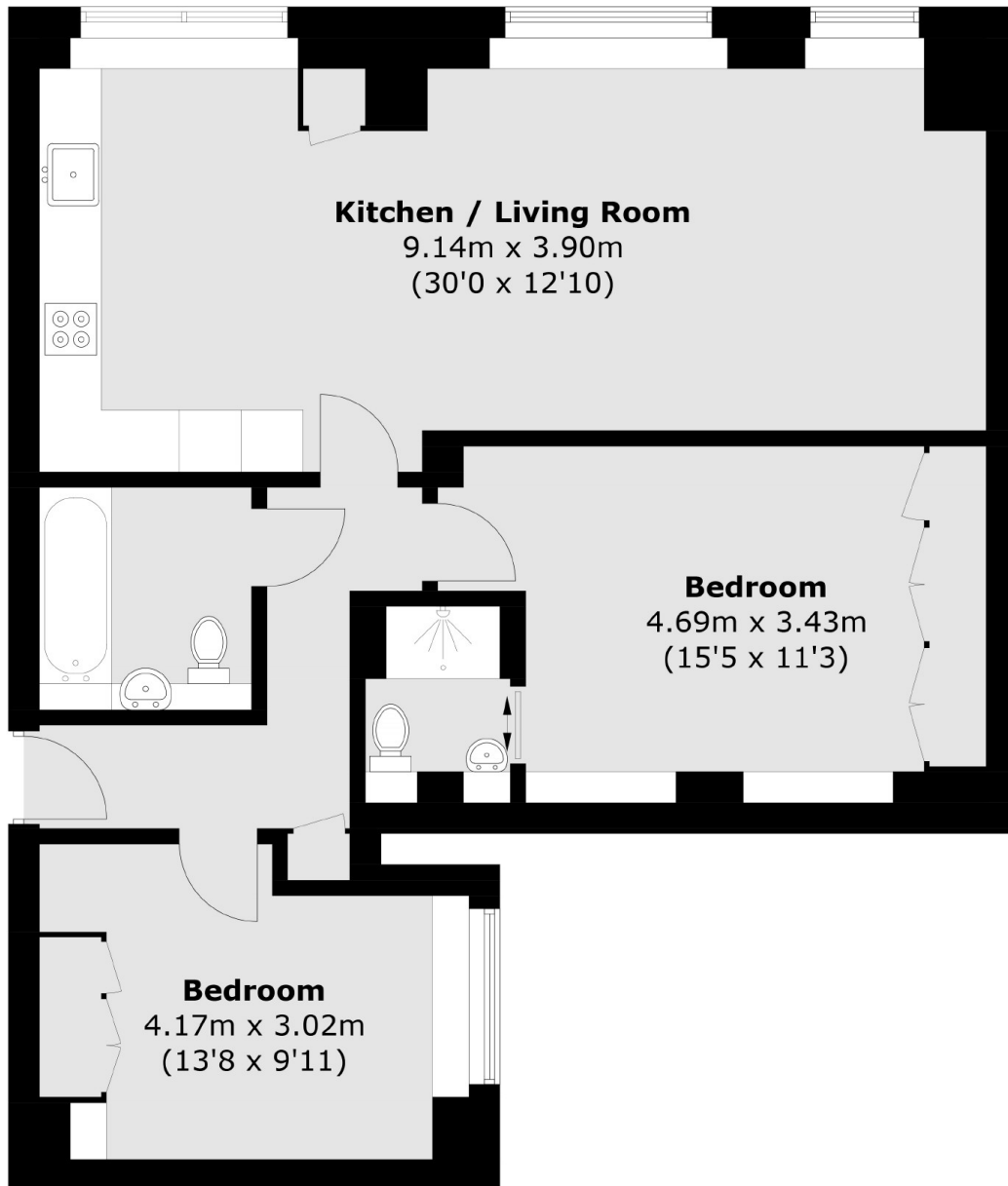
An immaculately presented third floor apartment in a Boutique SE1 development with a spacious open plan living space, large south-facing windows, two double bedrooms and two bathrooms. Offers in excess of £700,000.

Overlooking Union Street and tucked back off Borough High Street, the location couldn't be much better. Borough Market and London Bridge Station are both just around the corner, with the South Bank, Shard and numerous other attractions on your doorstep.

### Features

Very Central Location  
Excellent Transport Links  
Two Double Bedrooms  
Two Bathrooms  
Secure Entry & Lift Access  
Offers in excess of £700,000  
Chain Free Sale

Borough High Street,  
London, SE1



Total area (approx.): 81.1 sq. m (872.9 sq. ft)