



Quadrangle Close, SE1

£576 Per week

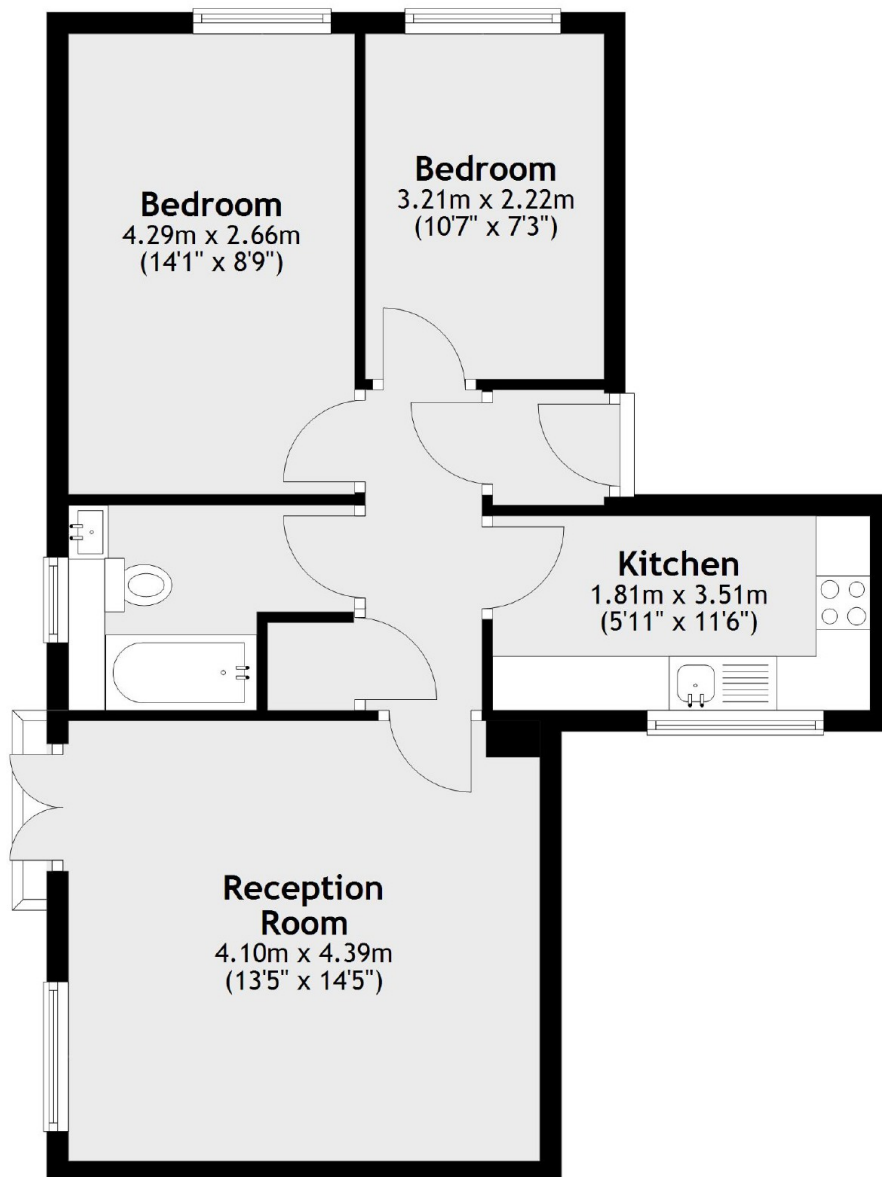
Two bedroom apartment situated on the first floor of this small gated development. The property is well maintained and features include wood flooring, Juliet balcony and separate kitchen

Situated close to Bermondsey street, popular for it's mix of independent shops, bars and restaurants. The weekend food market at Maltby Street market is also close by.

Features

- Two Bedroom Apartment
- First Floor
- Small Gated Development
- Wood Flooring
- Juliet Balcony

Quadrangle Close, London, SE1



Total area: approx. 54.2 sq. metres (583.6 sq. feet)