



Rotherhithe Street, SE16

£1,500,000

Offering spectacular views of London and the River Thames and being sold fully furnished, this three bedroom split level, penthouse warehouse conversion is immaculately presented throughout, with a large open plan kitchen and living area, three double bedrooms and two bathrooms.

New Archers Court is in the heart of Rotherhithe village and located only 0.1 miles from Rotherhithe Station, 0.3 miles from Canada Water station and has speedy access to The City via the Elizabeth line. The development is surrounded by shops, cafés and historic riverside eateries.

Features

- Penthouse Apartment
- Grade II Listed
- Warehouse Conversion
- Triple Aspect Views of London
- Former Victorian Granary
- Share of Freehold



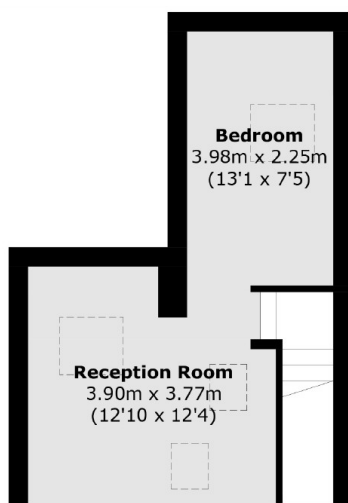
Rotherhithe Street, SE16

Arranged over two floors, the apartment features exposed brickwork, double height ceilings and wooden beams, while offering an abundance of natural light throughout. The vast open plan kitchen and living area perfect for entertaining. Two of the three bedrooms offer generous storage space, while the master bedroom also benefits from an en-suite bathroom. There is an additional spacious family bathroom.

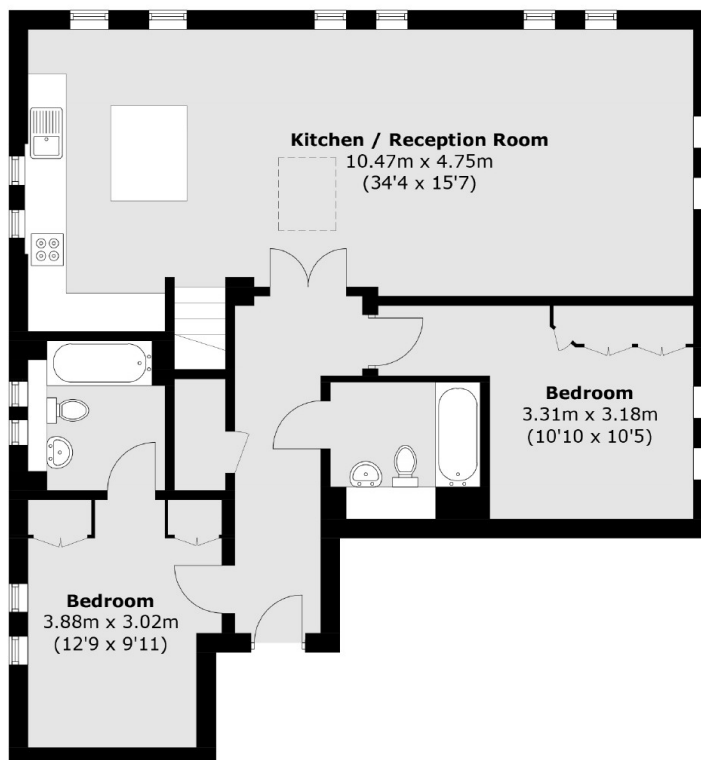
The development is directly on the river and offers stunning views of Tower Bridge, The City, The Shard and Canary Wharf. The historic Rotherhithe Village has many overhead walkways by the riverside and an array of attractions including the centuries old Mayflower pub and Brunel Museum.



Rotherhithe Street, London, SE16



Mezzanine Level



Fourth Floor

Total area (approx.): 120.2 sq. m (1,293.8 sq. ft)
(Including Mezzanine Level)