



Aberdour Street, SE1

£675,000

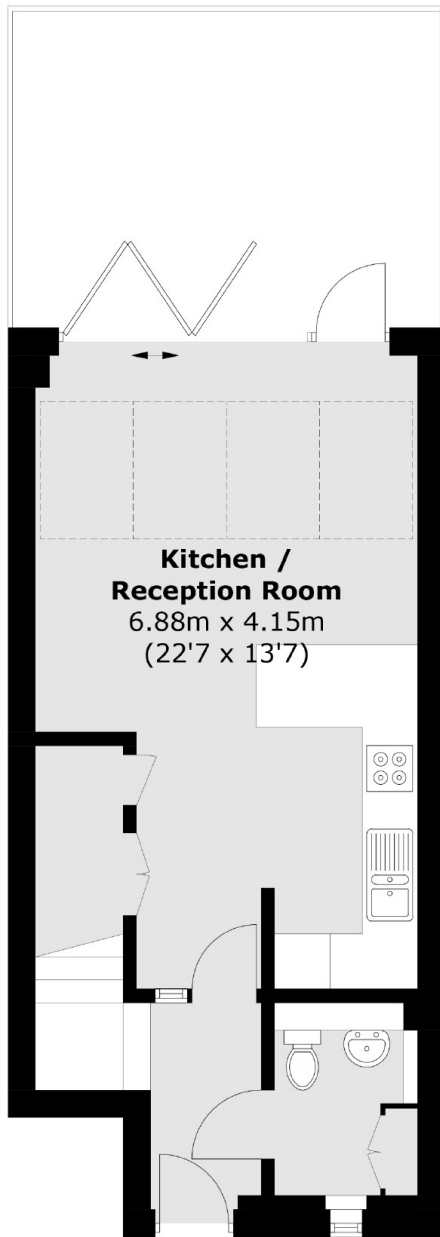
A highly attractive, duplex maisonette with its own front door, a spacious, open plan main reception room, a high spec kitchen, ample space for dining and a private rear garden, two double bedrooms, two bathrooms, a third W.C. This is a chain free sale. OIEO £675,000

Perfectly positioned for access to both London Bridge and Borough Stations, with the ever popular Bermondsey Street just moments away, along with numerous shops, restaurants and other attractions.

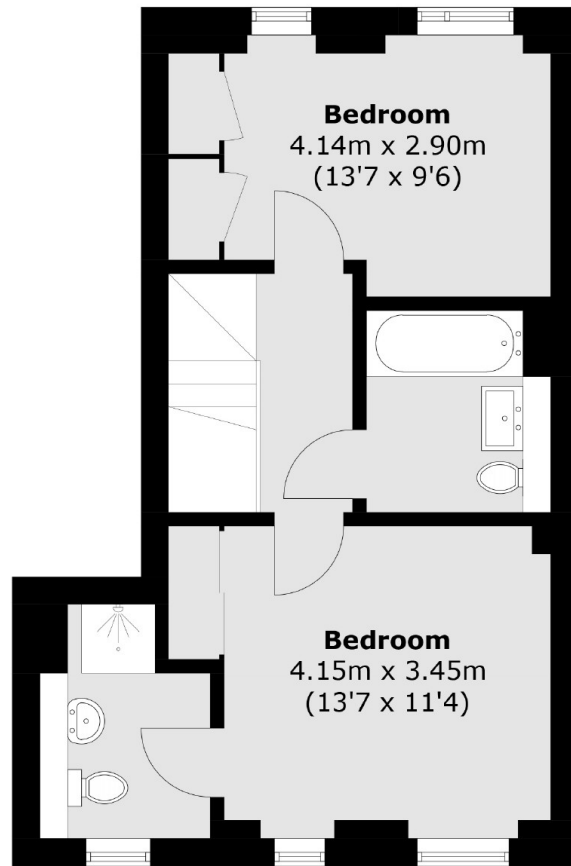
Features

Maisonette/Duplex Apartment
Private Garden
Open Plan Kitchen & Reception
Two Double Bedrooms
Two Bathrooms & WC
High Spec Finish
Offers in excess of £675,000

Aberdour Street,
London, SE1



Ground Floor



First Floor

Total area (approx.): 77.5 sq. m (834.2 sq. ft)