



Green Walk, SE1

£700,000

An immaculate, over 1,100 sq ft, 4th floor apartment, with wonderful exposed brickwork, large sash windows, original beams & high ceilings, a huge open plan kitchen & living room, a very generous double bedroom, dressing room/study & bathroom, with a bath & shower.

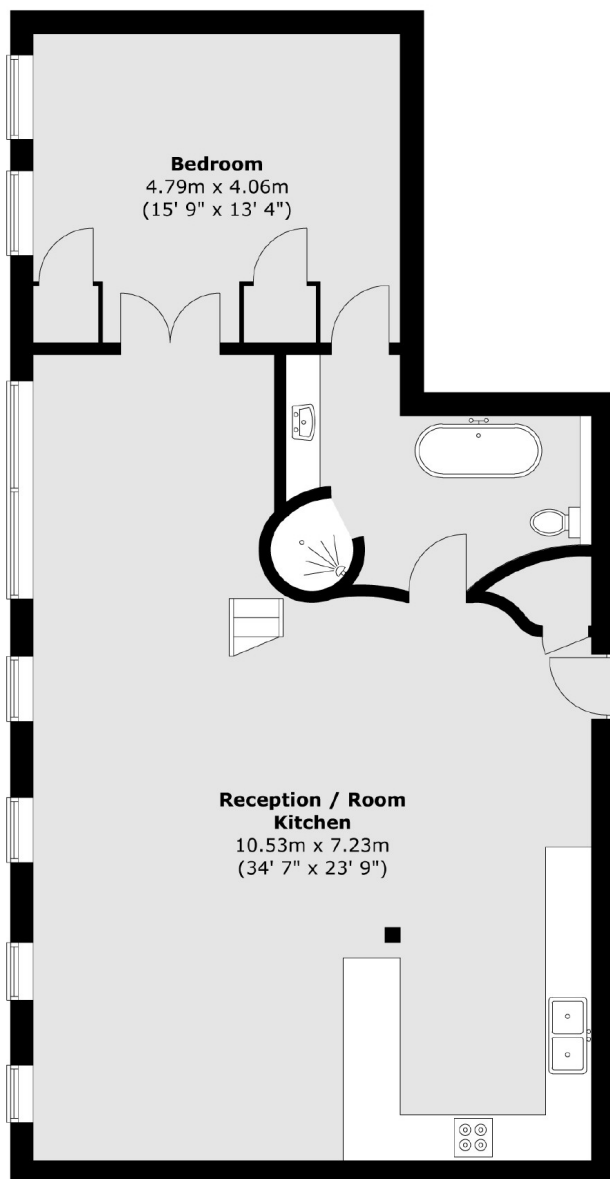
The Jam Factory is one of SE1's most sought after developments, moments away from Bermondsey Street & Bermondsey Square, with London Bridge Station, Borough Market and the South Bank all just beyond.

Features

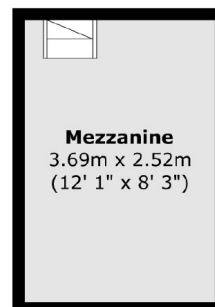
- Exposed Brick & Original Beams
- High Ceilings & Sash Windows
- Share of Freehold
- Lift Access & Concierge
- Chain Free Sale
- Valid EWS1 Form

Green Walk, London, SE1

Fourth Floor



Mezzanine



Total area (approx.) : 104.6 sq. m (1126 sq. ft)