



## Concorde Way, SE16

### £850,000

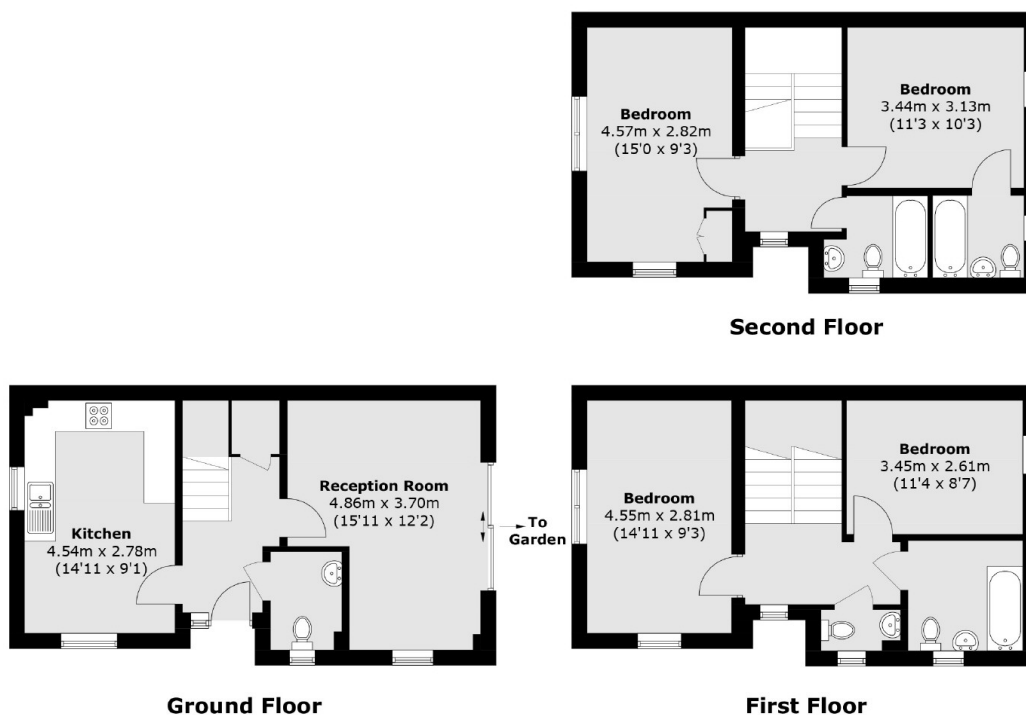
Located on a quiet leafy street, this three bedroom house is immaculately presented and boasts a large modern kitchen/diner, additional reception room, ample storage, private garden and parking.

Concorde Way is located just 0.3 miles from Surrey Quays station and 0.7 miles from Canada Water station offering fantastic transport links to anywhere in London. A wide range of shops, restaurants and cafés are just moments away.

### Features

- Three Bedrooms
- Freehold House
- Excellent Condition
- Private Garden
- Parking Available
- Chain Free
- OIEO £850,000

# Concorde Way, London, SE16



Total area (approx.): 119.2 sq. m (1,283 sq. ft)