

## Green Walk, SE1

### £575,000

Situated in a gated development, this one double bedroom warehouse conversion apartment is in stunning condition and boasts a large open plan kitchen living space, modern bathroom, floor to ceiling windows and City views.

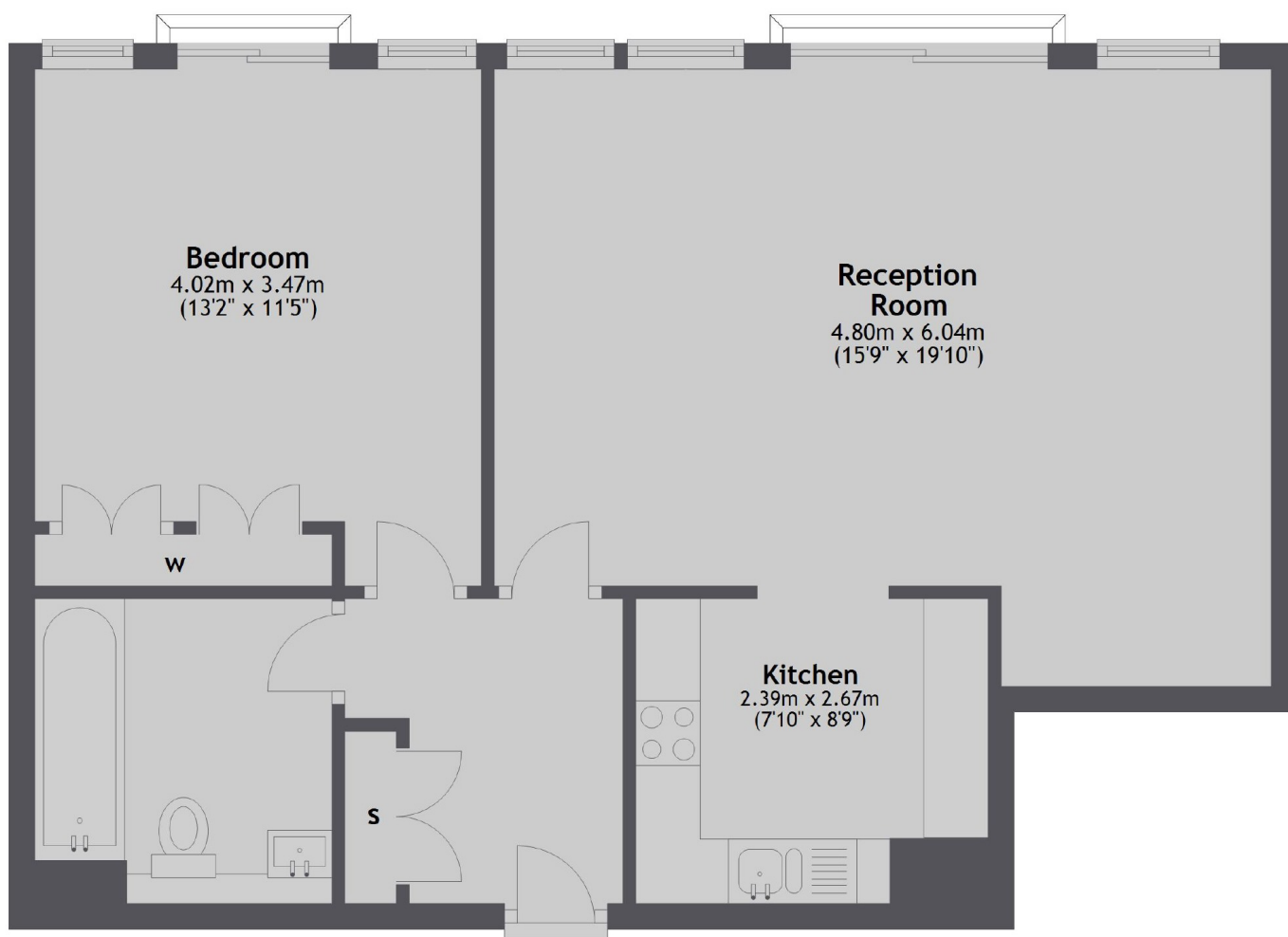
The Jam Factory is located only 0.8 miles from London Bridge station and 0.8 miles from Bermondsey station. The shops, cafés, delis and restaurants on Bermondsey Street are only 0.2 miles away.

### Features

- One Double Bedroom
- Warehouse Conversion
- Excellent Condition
- Floor To Ceiling Windows
- City Views
- Porter
- Valid EWS1 Form in Place

**Green Walk,  
London, SE1**

## Fifth Floor



Total area: approx. 58.9 sq. metres (634.2 sq. feet)

**Dexters**

London Bridge  
54 Borough High Street  
London  
SE1 1XL  
Sales  
020 7650 5 100

Energy Rating: B. We aim to make our particulars both accurate and reliable. However they are not guaranteed; nor do they form part of an offer or contract. If you require clarification on any points then please contact us, especially if you're traveling some distance to view. Please note that appliances and heating systems have not been tested and therefore no warranties can be given as to their good working order.

 **RICS** | Regulated  
Estate Agent  
and Letting Agent

[dexters.co.uk](http://dexters.co.uk)