



## Borough High Street, SE1

£1,250,000

A highly attractive split level apartment, completed in 2021, with a large open plan kitchen and living room, downstairs WC, two generous double bedrooms, two bathrooms, a large private balcony.

The Calverts Buildings are enviably located, tucked back of Southwark Street, moments from Borough Market, the Riverside, incredibly easy access to the Jubilee and Northern Lines and the overground via London Bridge Station.

### Features

- Split Level
- Two Double Bedrooms
- Two Bathrooms
- Brand New Lease
- Low Service Charges
- Chain Free Sale



## Borough High Street, SE1

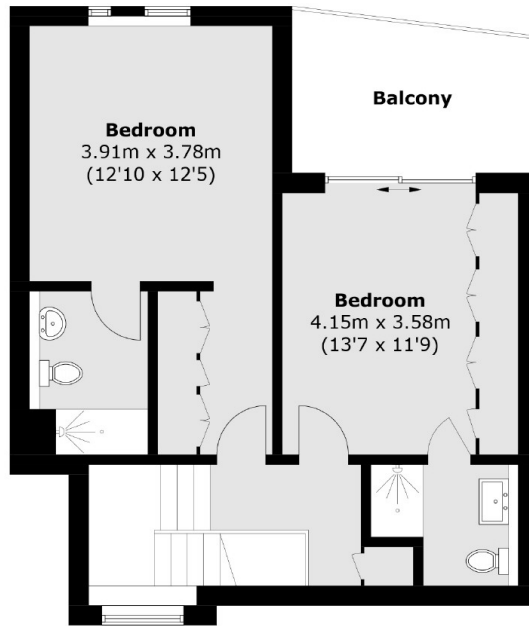
The Calverts Buildings is a boutique development of only four apartments, one town house and two offices, built to a very high specification, with under floor heating throughout, high quality fittings from its fully fitted kitchen to its two stylish bathrooms.

This apartment has a wonderful sense of space and light, with a southerly aspect and large floor to ceiling windows. The living space allows ample room for a sizeable living area, a large dining table and a generous kitchen with a breakfast bar.

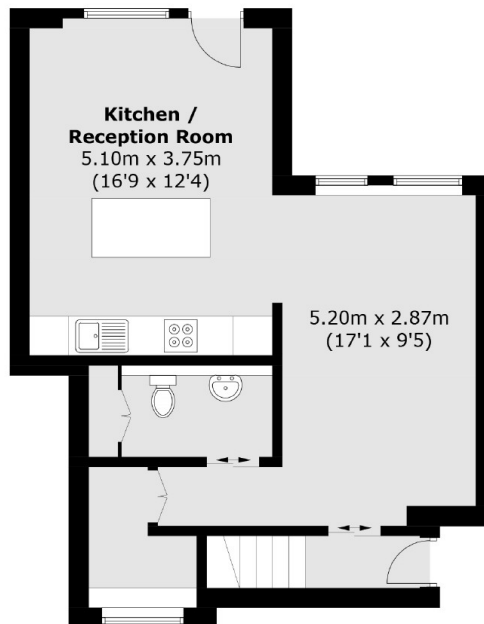
The property has only been occupied briefly and retains the feel of a new home. It is presented immaculately and would be a wonderful home or a fantastic investment. It is to be sold chain free with a brand new lease and low service charges.



Borough High Street,  
London, SE1



**First Floor**



**Ground Floor**

Total area (approx.): 100.3 sq. m (1,079.6 sq. ft)  
Balcony : 8.4 sq. m (90.4 sq. ft)