



## King & Queen Wharf, SE16

### £600,000

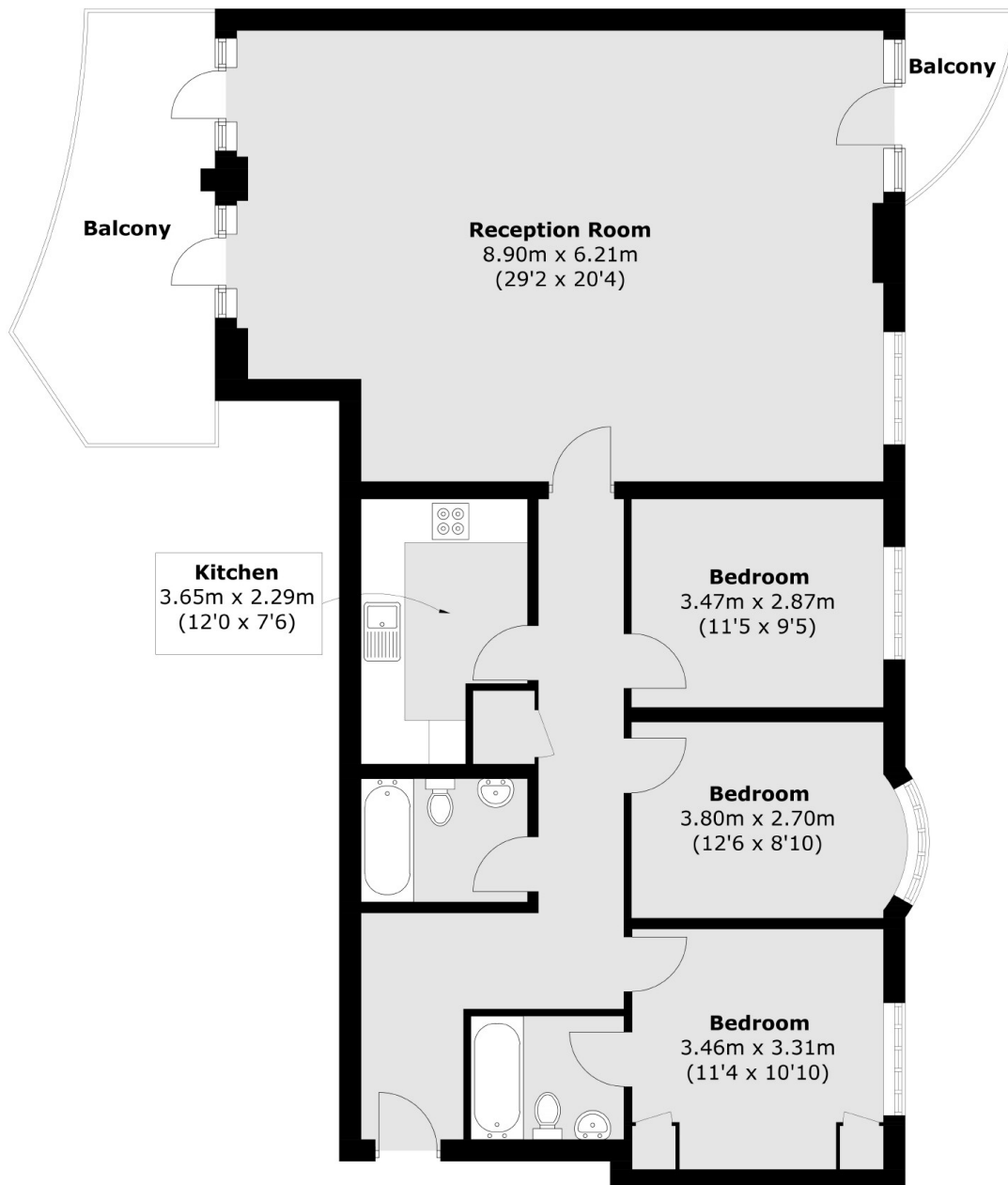
Offering spectacular views of the river, this three double bedroom flat is immaculately presented and boasts a large living space, separate kitchen, three balconies and ample storage. The development offers concierge, gym and swimming pool facilities.

Located just 0.6 miles from Rotherhithe station and 0.8 miles from Canada Water. Sandringham Court is surrounded by shops, cafés and riverside pubs and restaurants.

### Features

- Three Double Bedrooms
- Two Bathrooms
- Fantastic Condition
- Three Balconies
- Gym & Concierge
- River Views
- OIEO £600,000

# King & Queen Wharf, London, SE16



Total area (approx.): 120.3 sq. m (1294.9 sq. ft)  
Balcony: 15.4 sq. m (165.8 sq. ft)