



Mill Street, SE1

£850,000

Situated in this sought after Warehouse Conversion in Shad Thames, the flat offers two large double bedrooms, two bathrooms, separate kitchen, spacious living room, ample storage, private balcony and secure off street parking.

Vogans Mill Wharf is enviably located between Mill Street and St Saviour's Docks in Shad Thames, with easy access to London Bridge, and Bermondsey stations, Bank Side and Borough Market.

Features

- Two Double Bedrooms
- Two Bathrooms
- Communal Roof Terrace
- Secure Off-Street Parking
- Concierge Facilities
- Chain Free



Mill Street, SE1

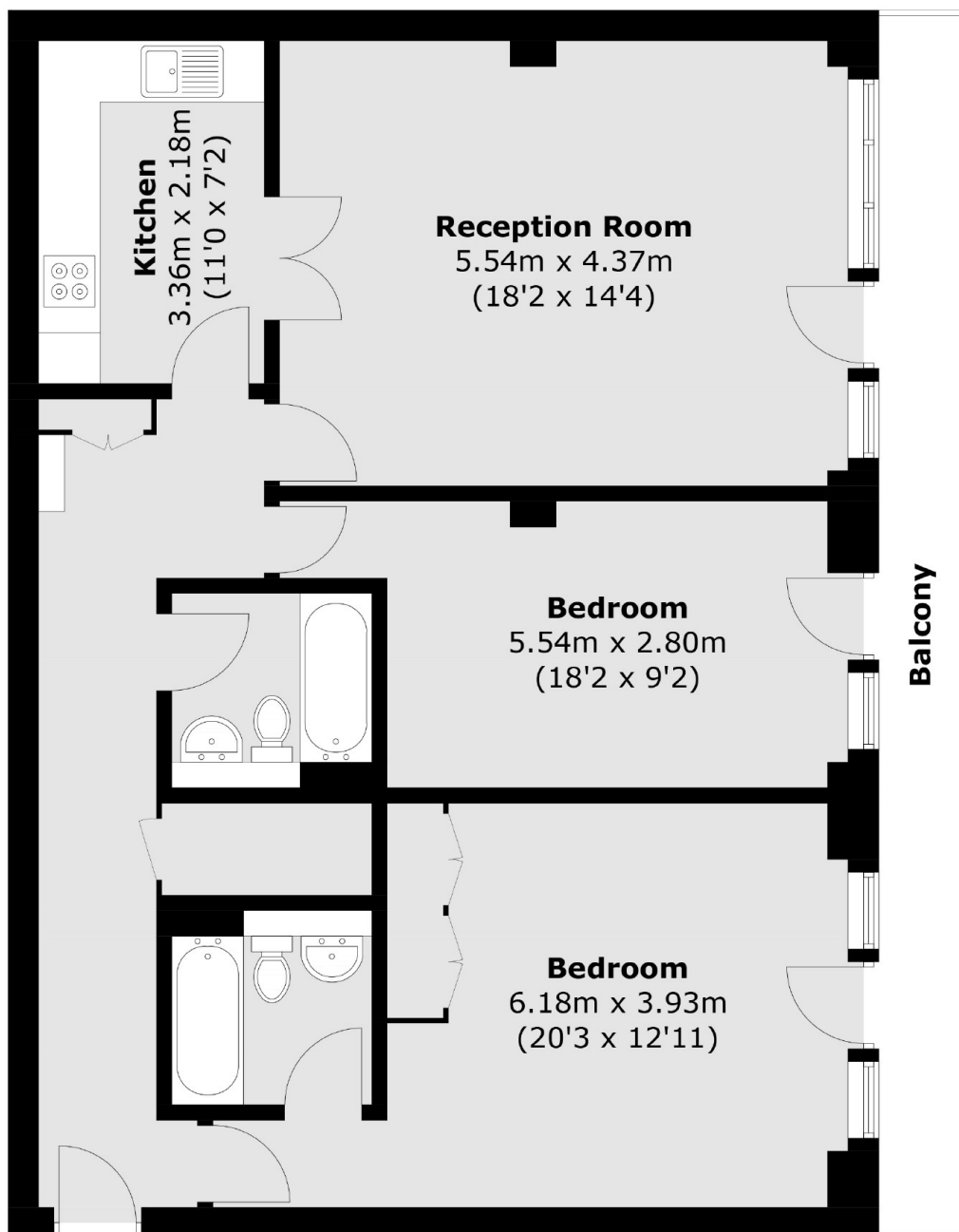
Located on the third floor, the flat has a stunning view of the water and access to the balcony from the living room and both bedrooms.

Both bedrooms are a very good size and the master bedroom benefits from large built-in wardrobes and an en-suite bathroom. There is also an additional bathroom and further storage in the hallway.

Vogans Mill Wharf boasts a 24 hour concierge, communal courtyard and a lovely fifth floor communal roof terrace, with skyline views. This property also benefits from secure, off-street parking.



Mill Street, London, SE1



Total area (approx.): 90.6 sq. m (975.2 sq. ft)
Balcony: 10.1 sq. m (108.7 sq. ft)