



## Nelson Square, SE1

£525,000

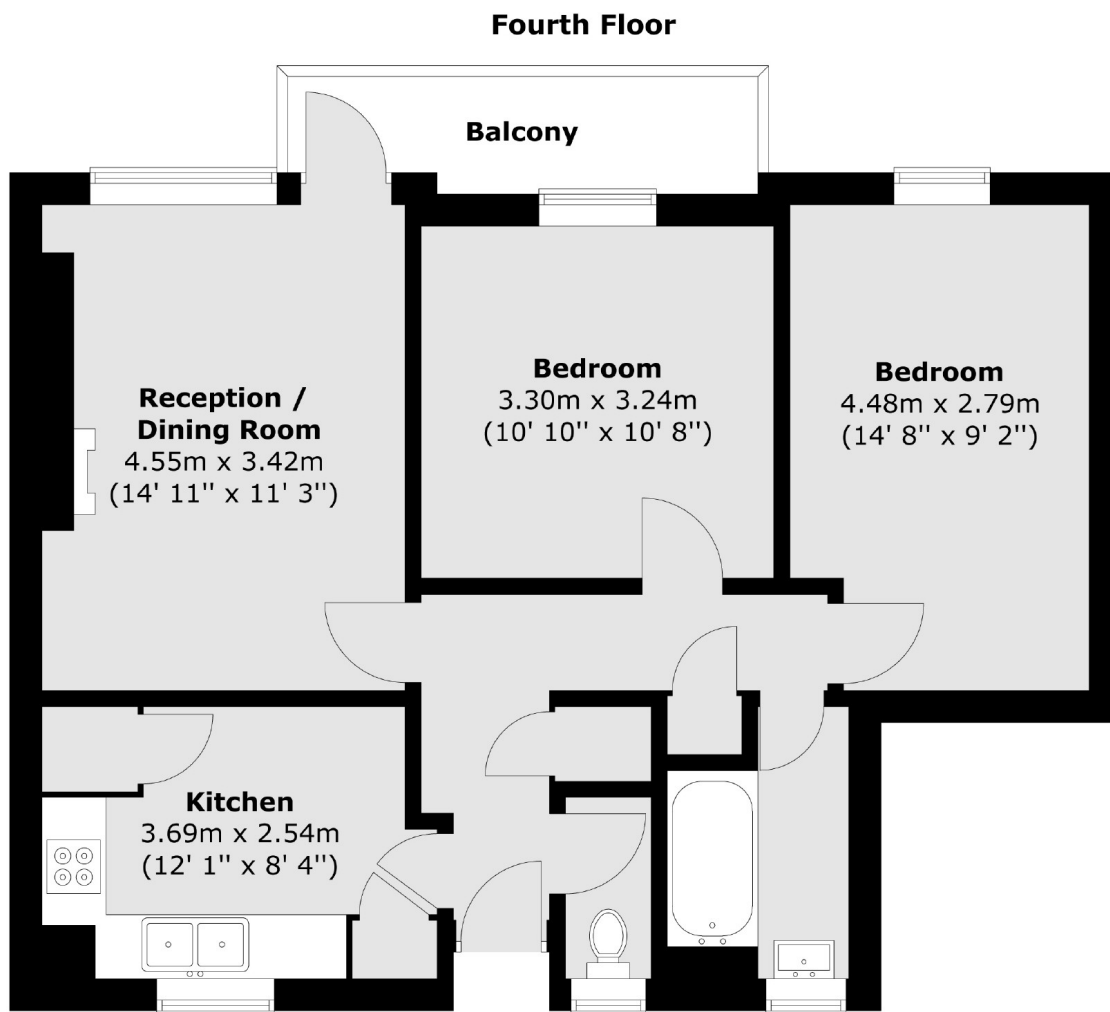
A spacious fourth floor flat with attractive westerly views over Nelson Square, a large eat-in kitchen and separate living room, leading onto a private balcony, two double bedrooms, bathroom and WC. Permit parking is available.

A fantastic location moments from Southwark Station and very close to both Waterloo and Blackfriars stations. There are numerous restaurants, shops and attractions along the riverside, Lower Marsh and the Cut.

### Features

- Two Double Bedrooms
- Large Eat-In Kitchen
- Separate Living Room
- Private Balcony
- Permit Parking
- Excellent Transport Links

# Nelson Square, London, SE1



Total area (approx.) : 63.9 sq. m (688 sq. ft)  
Total balcony area (approx.) : 4.2 sq. m (45 sq. ft)