



New Kent Road, SE1

£595,000

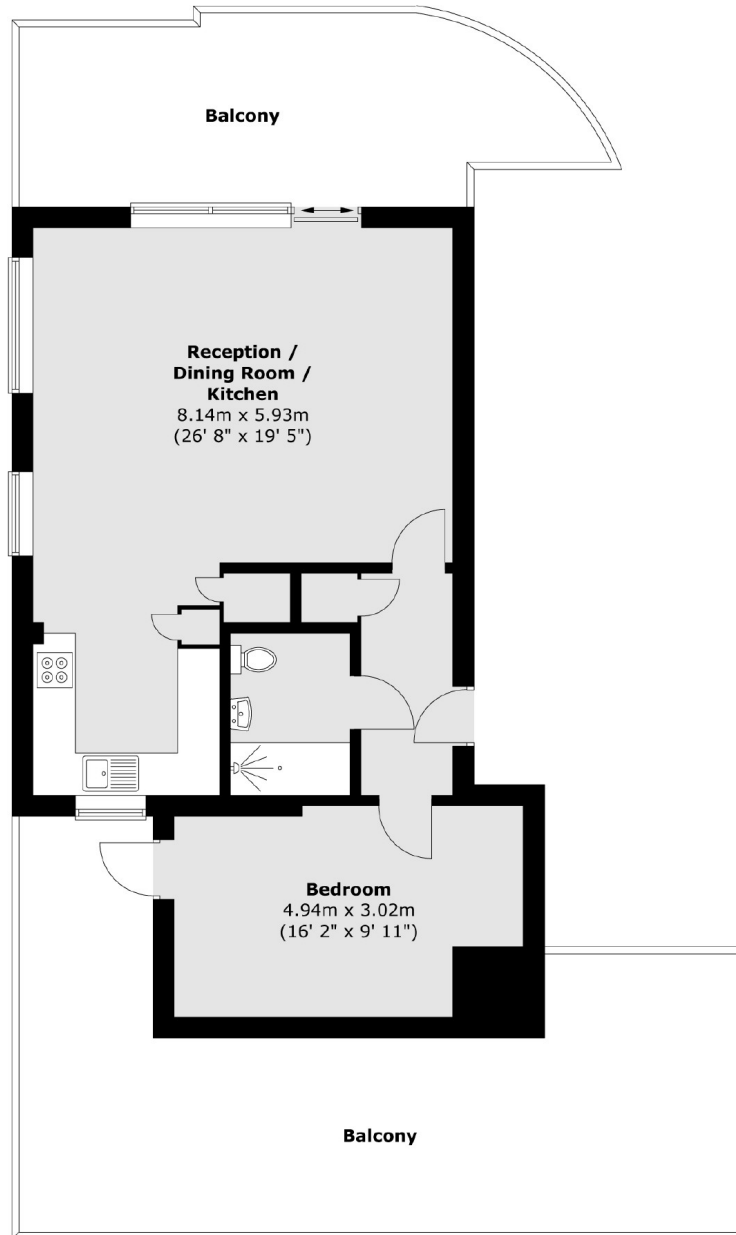
A highly attractive Penthouse Apartment with over 600 sq ft of outside space, a large open plan kitchen and living room, a three piece bathroom, a generous double bedroom and allocated off-street parking. Chain free sale.

Tavern Court on New Kent Road is located 0.4 miles from Elephant & Castle tube station offering excellent transport links and a wide variety of shops, cafés and restaurants.

Features

- Penthouse Apartment
- Excellent Condition
- Large Roof Terrace
- Additional West-Facing Balcony
- Excellent Transport Links
- Off-Street Parking

New Kent Road, London, SE1



Total area (approx.) : 63.9 sq. m (688 sq. ft)
Total balcony area (approx.) : 57 sq. m (613 sq. ft)