



Green Walk, SE1

£1,100,000

A wonderfully presented warehouse apartment with spectacular skyline views, floor to ceiling windows, a large open plan living space, full length balcony, two double bedrooms and two bathrooms (one en-suite). Plus underground parking space.

The Jam Factory is one of SE1's most desirable developments, set on Green Walk, moments from Bermondsey Street, with London Bridge, Borough Market & the Southbank just beyond.

Features

- 5th Floor Apartment
- Skyline Views
- Floor to ceiling windows
- Secure Underground Parking
- 24 Hour Concierge
- Share of Freehold



Green Walk, SE1

This apartment benefits from a wonderful sense of space and light, large full height windows and french doors and is immaculately presented with a high spec kitchen, with breakfast bar and two recently fitted modern bathrooms.

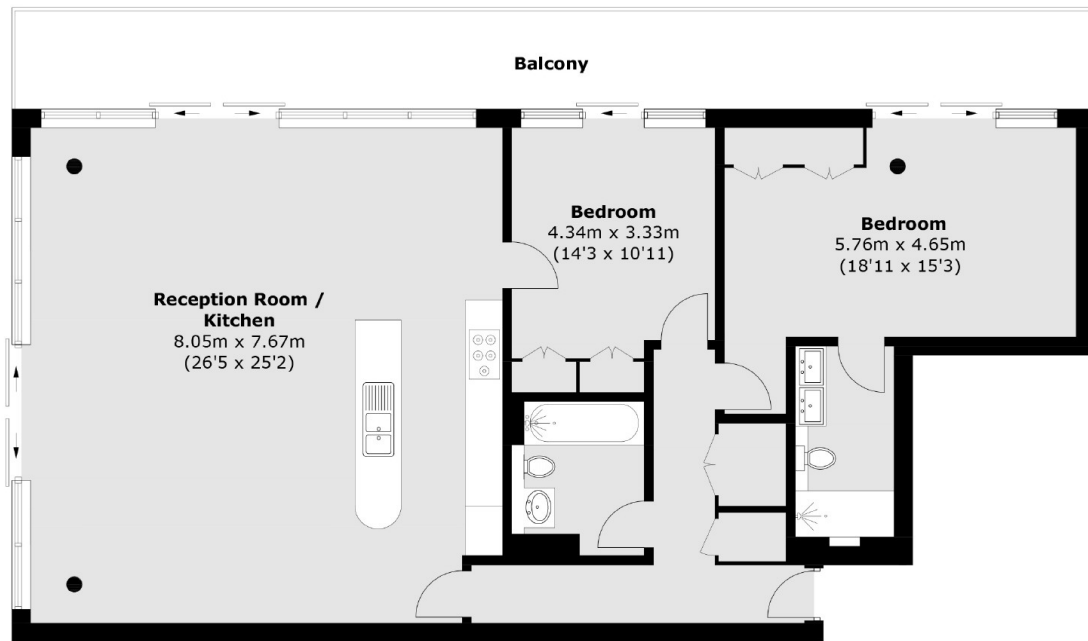
Both bedrooms are large doubles, each with large built-in wardrobes and direct access to the balcony. The principal bedroom is served by a smart new shower room, with twin sinks and a large walk-in shower. There is a second guest bathroom accessed via the hallway.

The former Hartley's Jam factory is iconic, award-winning development, with an attractive blend of period charm and contemporary design, accentuating the best original features, yet benefiting from modern fittings throughout.

Benefitting from an on-site concierge, landscaped communal gardens, walkways and a children's' play area, there is a genuine community feel here. This flat is also sold with secure, off-street parking.



Green Walk, London, SE1



Total area (approx.): 122.0 sq. m (1,313.2 sq. ft)
Balcony (approx.): 27.9 sq. m (300.3 sq. ft)