



## Bermondsey Square, SE1

£600,000

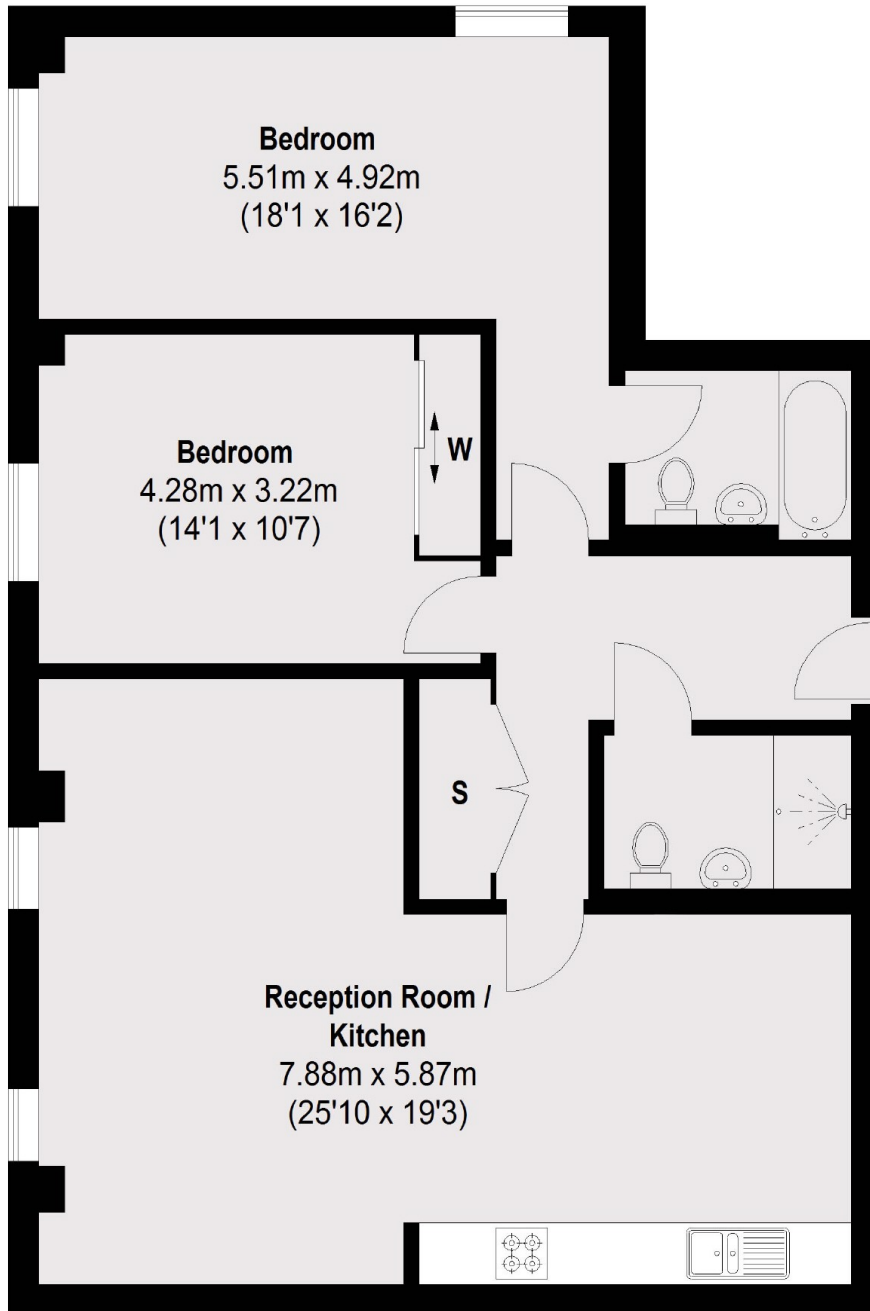
Located moments from Bermondsey Street, this two double bedroom flat is immaculately presented throughout and boasts a large open plan kitchen and living space, two bathrooms and ample storage. Offers in excess of £600,000.

Bermondsey Square is located 0.5 miles from London Bridge station and 0.6 miles to Bermondsey station. Bermondsey Street, Maltby Street and a wide range of shops, cafés and restaurants are moments away.

### Features

Offers in excess of £600,000  
Two Bedrooms  
Two Bathrooms  
Fantastic Location  
24 hour Concierge  
Bicycle Storage  
Valid EWS1 Form

Bermondsey Square,  
London, SE1



**First Floor**

Total area (approx.): 88.52 sq. m (953 sq. ft)