



Bath Terrace, SE1

£375,000

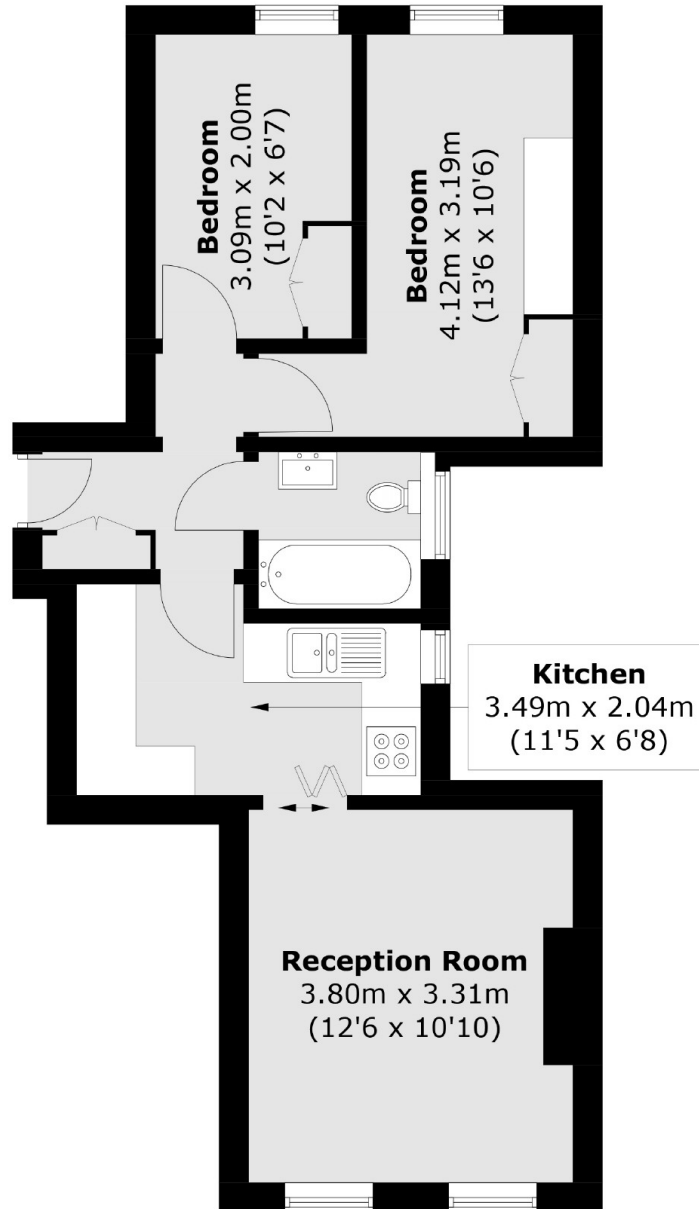
A charming Victorian Mansion flat with an open plan kitchen & living room, a modern shower room, two bedrooms, plus high ceilings & attractive sash windows. This is a great first time buy or buy to let investment. Offers in excess of £375,000.

Bath Terrace is under 0.5 miles from Borough underground & Borough High Street & 0.25 miles from Elephant & Castle. Block overlooking Newington Gardens. Minutes away from the renowned Mercato Metropolitano with many other amenities nearby.

Features

Two Bedrooms
Victorian Mansion Block
Private Freeholder
Open Plan Kitchen & Living Room
Chain Free
Offers in excess of £375,000

Bath Terrace,
London, SE1



Total area (approx.): 43.4 sq. m (467.1 sq. ft)