



## Hilary Mews, SE1

£1,100,000

A highly desirable duplex Penthouse Apartment, with fantastic views a spacious open plan living area, with a high spec modern kitchen and ample room for dining, plus two double bedrooms, two bathrooms and two balconies.

Brandon House is incredibly well located for transport with local cafés and bars close by on the High Street. The popular Borough Market, Bermondsey Street, the Shard and the South Bank are all within walking distance.

### Features

Duplex Penthouse Apartment  
Two Private Balconies  
Two Double Bedrooms & Two  
Bathrooms  
24 Hour Concierge  
Air Conditioning  
Lift Access & Secure Entry  
Chain Free Sale



## Hilary Mews, SE1

Brandon House is one of SE1's premier gated developments, with a very exclusive feel and a high quality finish. Benefits include a 24 hour concierge, cycle storage, secure entry and lift access.

The apartment itself is stunning, with very high ceilings, large windows and plenty of natural light. There are fantastic views from both floors, taking much of the skyline including the Shard, whilst the London Eye is visible from the upper floor.

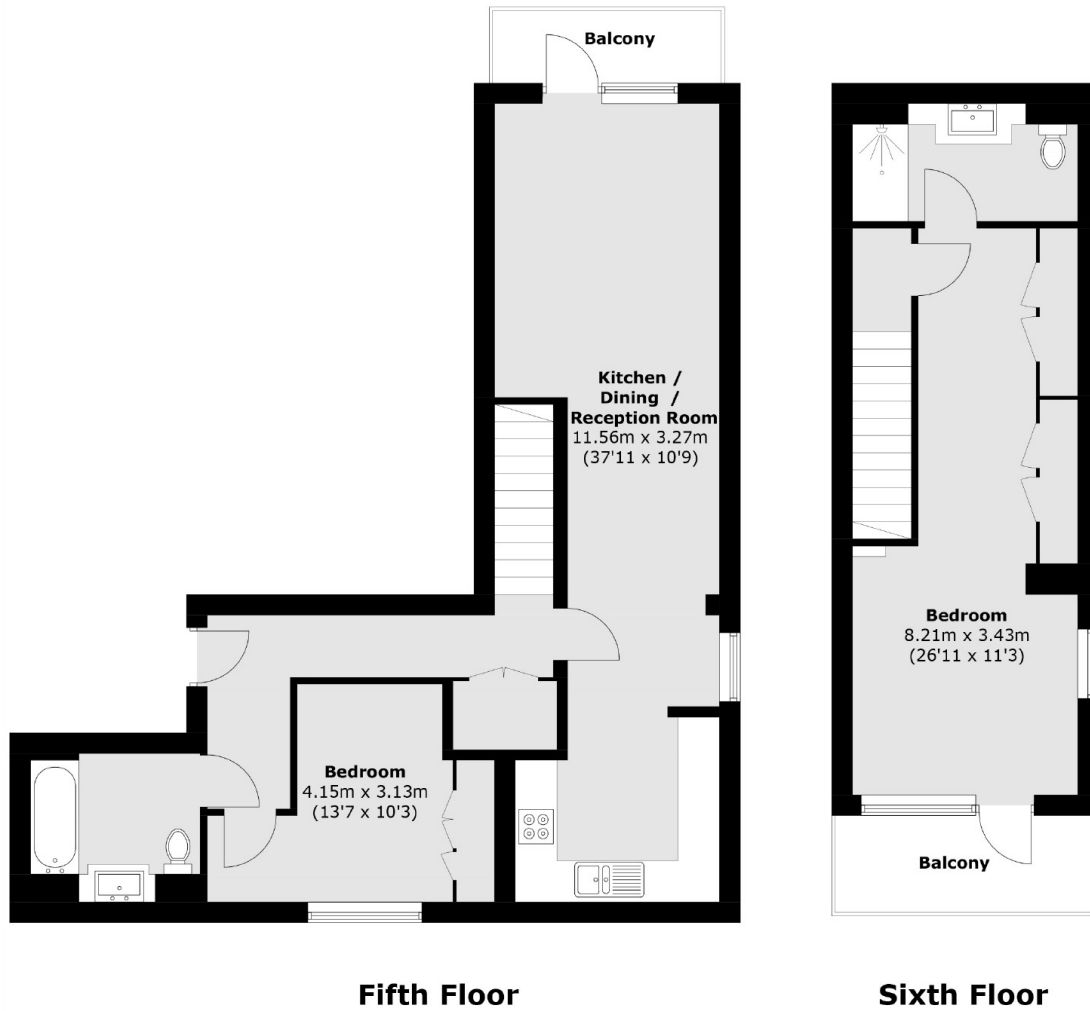
Both bedrooms are double rooms, each with very large fitted wardrobes. There are two bathrooms, including a smart en-suite bathroom, with a large shower and a second guest bathroom on the lower floor.

The main living space again benefits from the high ceilings and a south easterly, with a high spec modern kitchen and integrated Siemens appliances, plenty of room for dining and separate seating space.





Hilary Mews,  
London, SE1



Total area (approx.): 93.1 sq. m (1002.1 sq. ft)  
Balconies area: 8.7 sq. m (93.6 sq. ft)