



Southwark Bridge Road, SE1 £485,000

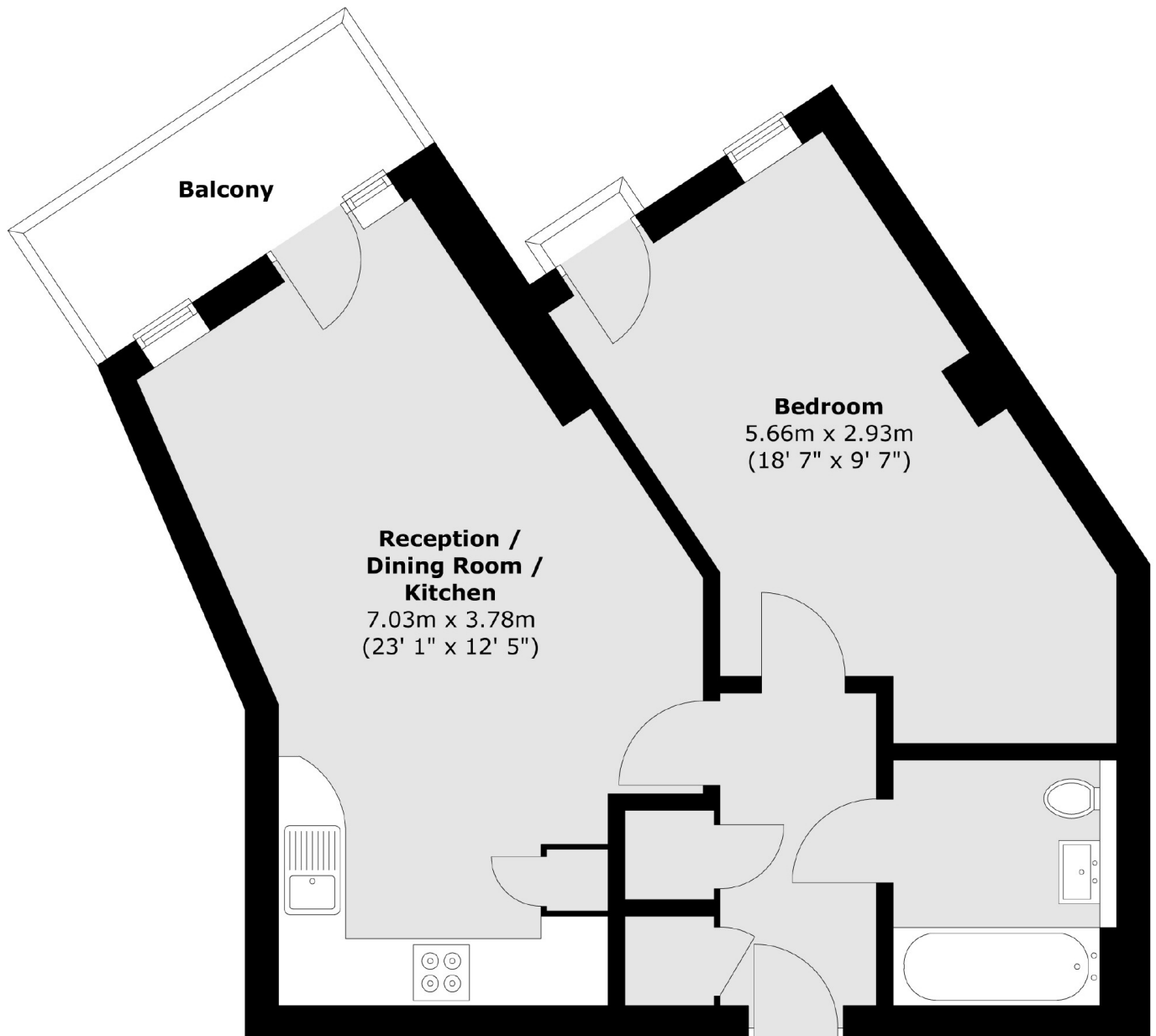
An attractive west-facing apartment in MyBase with an open plan kitchen/living room, leading onto a private balcony overlooking the communal courtyard, a large double bedroom, a three piece bathroom and ample storage. The lease is also currently being extended.

Located in the heart of SE1, between Borough, Southwark, London Bridge and Elephant & Castle stations, with easy access to Bankside, Borough Market, Tate Modern & Globe Theatre. Westminster and the City are both within easy reach.

Features

- Lease Being Extended
- EWS1 Compliant
- Secure Entry & Lift Access
- Private Balcony
- Third Floor Flat

Southwark Bridge Road, London, SE1



Total area (approx.) : 51.5 sq. m (554 sq. ft)
Total balcony area (approx.) : 4.3 sq. m (46 sq. ft)