



Falmouth Road, SE1

£385,000

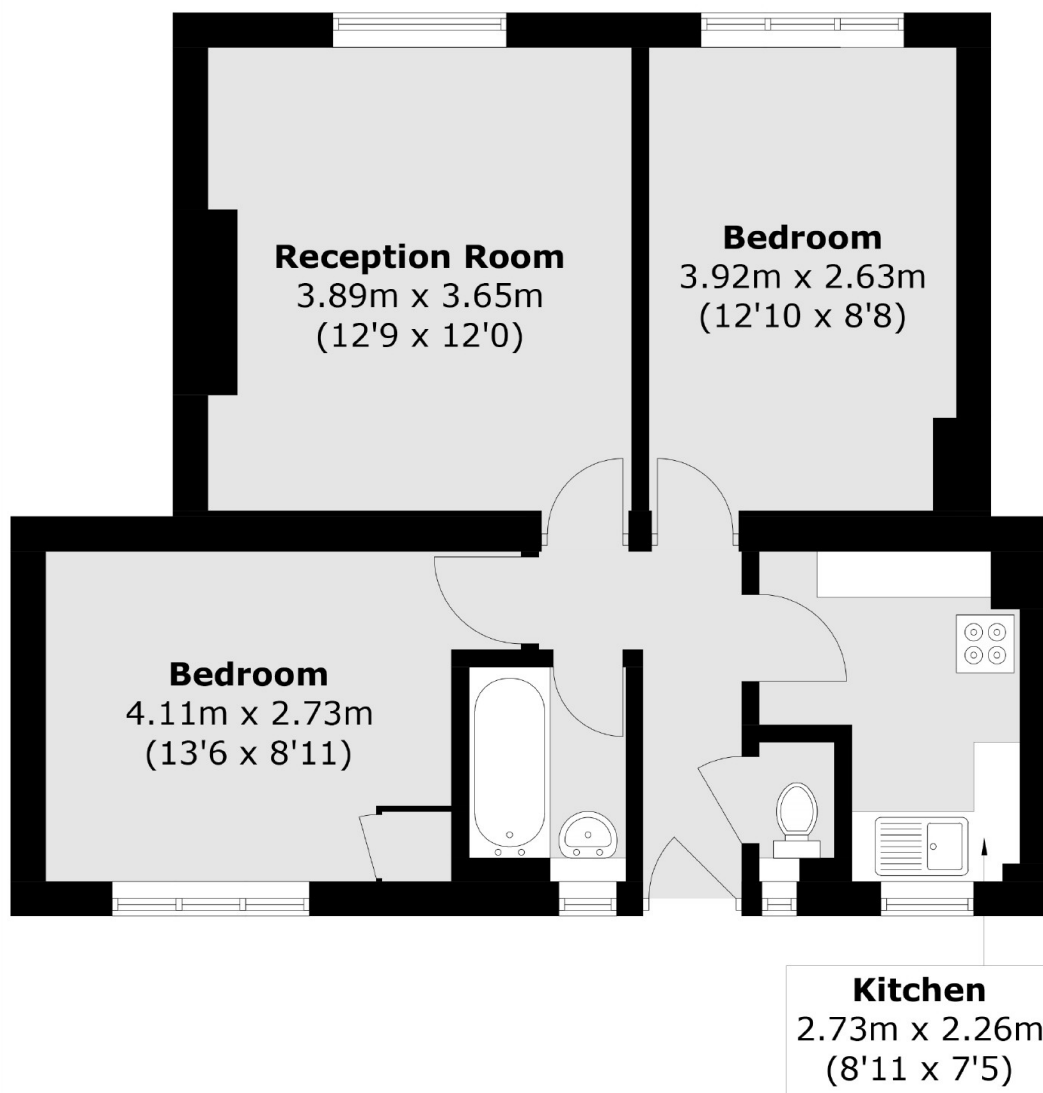
An attractive mid-floor flat, with a separate kitchen and living room, two generous double bedrooms, with ample room for storage, large sash windows, bathroom and WC. Permit parking is also available.

Falmouth Road is located 0.4 miles from Elephant & Castle station and 0.6 miles from Borough Station offering fantastic transport links. A wide range of shops, cafés and food markets are moments away.

Features

- Two Double Bedrooms
- Large Windows & West Facing
- Separate Kitchen & Living Room
- Permit Parking
- Chain Free Sale

Falmouth Road, London, SE1



Total area (approx.): 52.1 sq. m (560.8 sq. ft)