



## Lucey Way, SE16

### £300,000

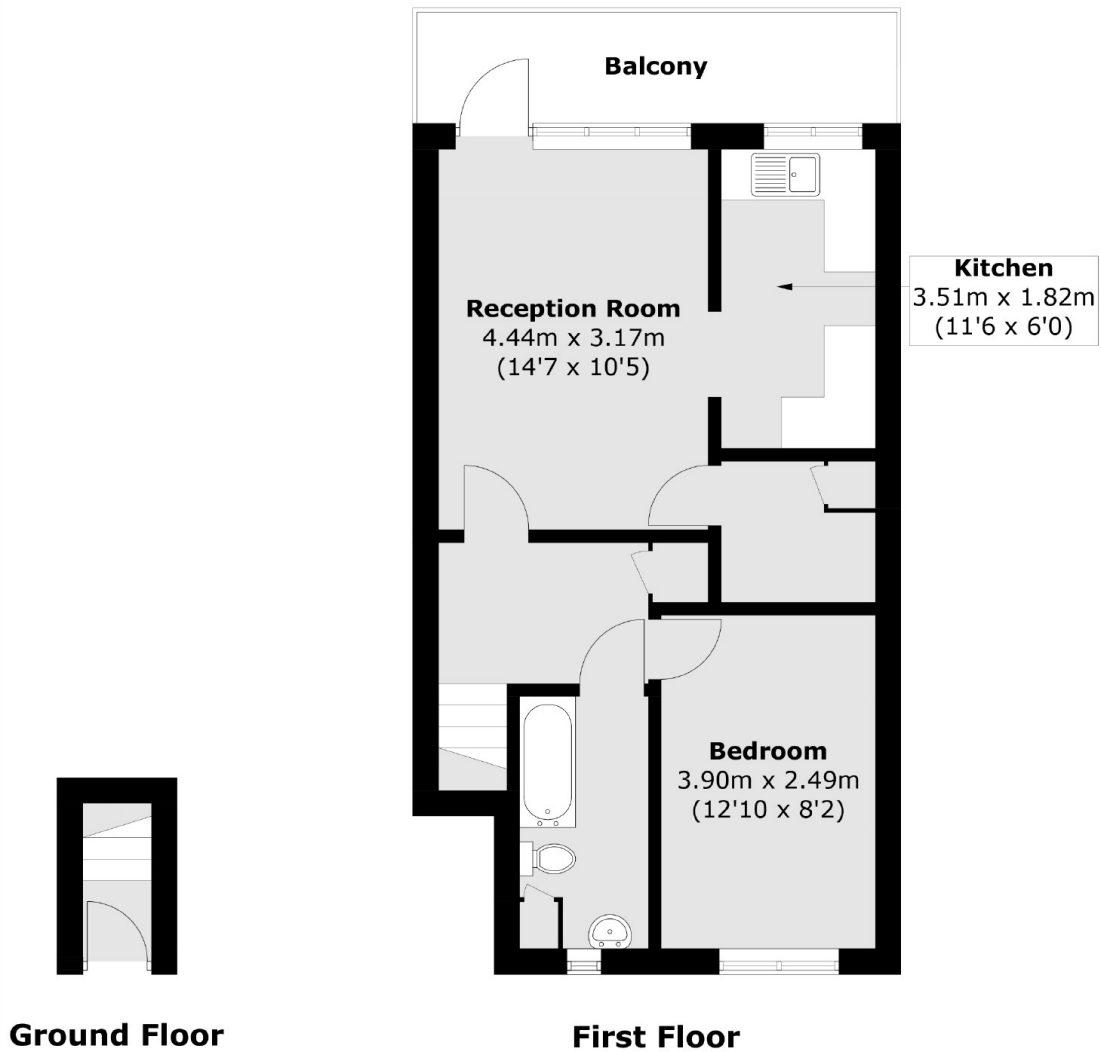
Overlooking a park, this light and airy one bedroom flat is in great condition and boasts a large living space, separate kitchen, ample storage and large private terrace.

Lucey Way is only 0.4 miles from Bermondsey Station. Bermondsey Street and Maltby Street market are close by along with a range of shops, cafés and delis.

### Features

- One Double Bedroom
- Excellent Location
- Private Terrace
- First Floor
- Overlooking A Park
- OIEO £300,000

# Lucey Way, London, SE16



Total area (approx.): 47.6 sq. m (512.3 sq. ft)  
Balcony area (approx.): 7.3 sq. m (78.6 sq. ft)