



Pardoner Street, SE1

£450,000

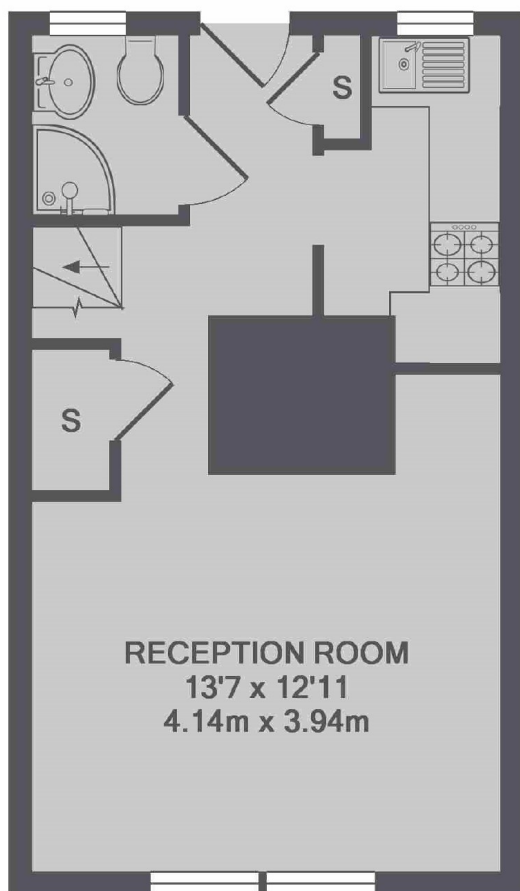
A smartly presented two double bedroom split level flat with a fully fitted modern kitchen, separate living room with hard wood floors, large sash windows, ample built-in storage and views over Tabard Gardens. Offers in excess of £475,000.

Pardoner Street is tucked back from Tabard Street and Long Lane, next to Tabard Gardens and within easy reach of Bermondsey Street, London Bridge Station and the South Bank.

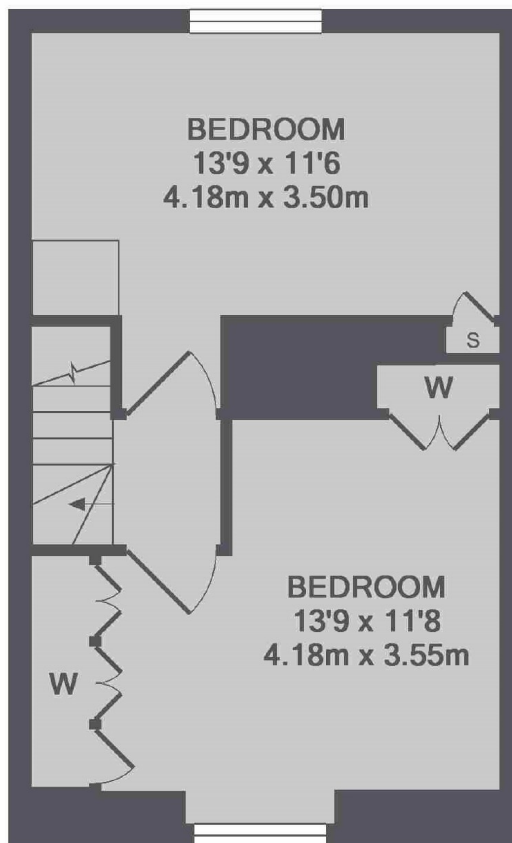
Features

- Split Level Flat
- Top Floor
- Two Double Bedrooms
- Immaculately Presented
- Wooden Floor & Sash Windows
- Lift Access
- OIEO £475,000

Pardoner Street, London, SE1



3RD FLOOR



4TH FLOOR

TOTAL APPROX. FLOOR AREA 628 SQ.FT. (58.4 SQ.M.)