



Grange Road, SE1

£1,600,000

An extremely spacious split level Penthouse Apartment in SE1's iconic Alaska Buildings, with wonderful period features throughout, a very large full width reception room, an additional mezzanine level, a private terrace, two large double bedrooms & two bathrooms.

Alaska Buildings is a landmark development situated within a short walk of Bermondsey street and Tower Bridge Road and within walking distance of both Bermondsey and London Bridge stations.

Features

- Warehouse Conversion
- Two Bedrooms & Two Bathrooms
- Private Terrace
- Original Features
- 24 hr Concierge
- Fantastic Views



Grange Road, SE1

The main reception room is stunning with double height ceilings, exposed brickwork, original beams, large windows and hard wood floors, extending across the full width of the property. There is high spec kitchen, ample room for dining and a very generous living area.

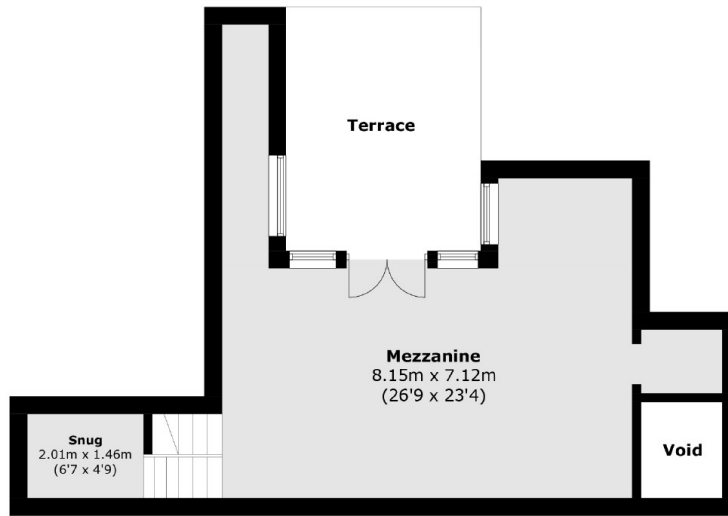
On the upper floor is a second reception room, overlooking the main space and out onto the terrace. It is currently set out as an additional sitting room/study. The terrace benefits from a westerly aspect and is flooded with natural light.

Both bedrooms are generous double bedrooms, each with built-in wardrobes. The master bedroom is served by an en-suite shower room, whilst there is an additional guest bathroom and ample storage throughout the property.

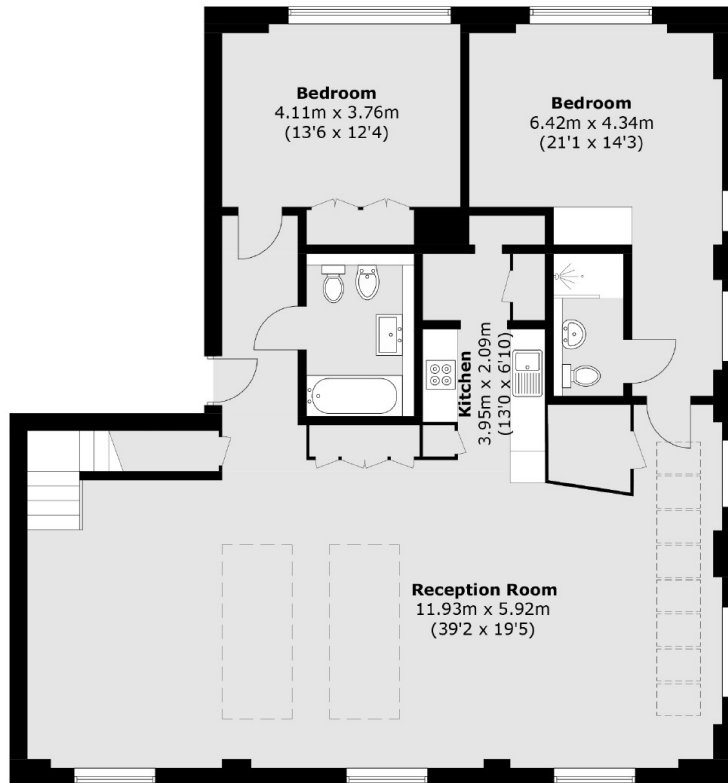
The Alaska Buildings is a very exclusive and secure, gated development, with a very hard to find community feel, a 24 hour concierge, and attractive communal water gardens. The apartment is also sold with a Share of Freehold.



Grange Road, London, SE1



Mezzanine



Fourth Floor

Total area (approx.): 171.1 sq. m (1,841.7 sq. ft)
(Excluding Void / Including Mezzanine)
Terrace area : 14.1 sq. m (151.8 sq. ft)